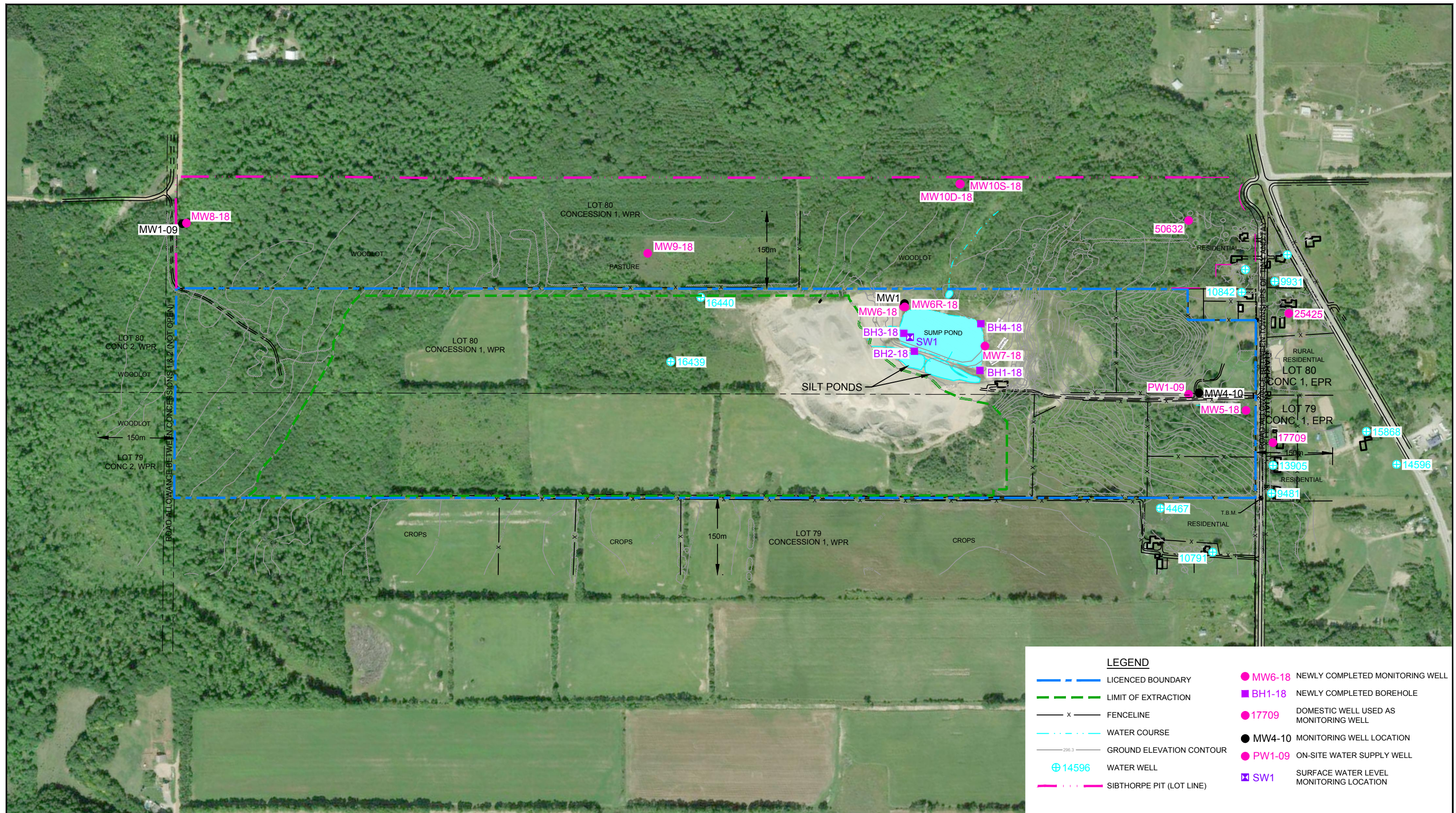
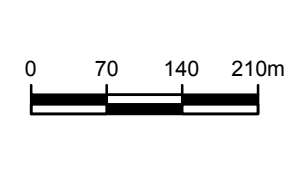


2018 Monitoring Well  
Stratigraphic and Instrumentation Logs  
Dufferin Teedon Pit



Source: Microsoft Product Screen shot Reprinted with permission from Microsoft Corporation, Aquisition Date 2018, Accessed April, 2018



DUFFERIN TEEDON PIT  
TOWNSHIP OF TINY, COUNTY OF SIMCOE, ONTARIO

11155365-10  
Oct 30, 2018

2018 MONITORING WELL LOCATIONS

FIGURE 1



# STRATIGRAPHIC AND INSTRUMENTATION LOG (OVERBURDEN)

PROJECT NAME: CRH-TEEDON PIT  
 PROJECT NUMBER: 11155365  
 CLIENT: CRH CANADA GROUP INC  
 LOCATION: TINY TOWNSHIP, ONTARIO

HOLE DESIGNATION: MW5-18  
 DATE COMPLETED: 5 April 2018  
 DRILLING METHOD: SONIC  
 FIELD PERSONNEL: K. VANDER MEULEN

DEPTH m BGS	STRATIGRAPHIC DESCRIPTION & REMARKS	ELEV. m	MONITORING WELL	SAMPLE			
				NUMBER	INTERVAL	REC (%)	
	NORTHING: 4945106.2 EASTING: 592450.79	TOP OF RISER GROUND SURFACE	257.19 256.39				
2	TOPSOIL	256.08	CONCRETE	1RS		71	
	ML-SILT, some clay, loose, brown, oxidized, wet	254.86	BENTONITE GROUT				
	SM-SILTY SAND, compact, very fine grained, dilatant, poorly graded, brown, wet	254.10		2RS		100	
4	SP-SAND, with silt, trace gravel, compact, very fine grained, poorly graded, brown, wet	251.82	51mm PVC WELL CASING				
6	SM-SILTY SAND, trace clay, compact, very fine grained, slightly dilatant, poorly graded, brown, wet		152mm BOREHOLE	3RS		100	
8							
10	ML-SILT, with very fine sand, compact, dilatant, brown, wet	247.55		4RS		100	
12	SP-SAND, trace silt, compact, fine grained, poorly graded, brown, wet	246.33		5RS		100	
14							
16	SM-SILTY SAND (Till), with gravel, trace clay, compact, very fine grained, poorly graded, grey, very moist to wet	241.45		6RS		100	
18	ML-SILT, trace clay, compact, dilatant, grey, wet	239.01		7RS		100	
20	- with clay at 18.90m BGS						
22				8RS		100	
24							
26	- with clay at 24.99m BGS			9RS		100	
28	CL-SILTY CLAY, stiff, low plasticity, slightly dilatant, grey, wet	229.87		10RS		100	
30				11RS		100	
32							
34				12RS		100	
36							
38	- medium plasticity at 38.10m BGS			13RS		100	
40				14RS		100	

NOTES: MEASURING POINT ELEVATIONS MAY CHANGE; REFER TO CURRENT ELEVATION TABLE

OVERBURDEN LOG 11155365-WI.GPJ GHD\_Corp 15/6/18



# STRATIGRAPHIC AND INSTRUMENTATION LOG (OVERBURDEN)

PROJECT NAME: CRH-TEEDON PIT  
 PROJECT NUMBER: 11155365  
 CLIENT: CRH CANADA GROUP INC  
 LOCATION: TINY TOWNSHIP, ONTARIO

HOLE DESIGNATION: MW5-18  
 DATE COMPLETED: 5 April 2018  
 DRILLING METHOD: SONIC  
 FIELD PERSONNEL: K. VANDER MEULEN

DEPTH m BGS	STRATIGRAPHIC DESCRIPTION & REMARKS	ELEV. m	MONITORING WELL	SAMPLE			
				NUMBER	INTERVAL	REC (%)	
42							
44	- 51mm medium sand seam at 44.20m BGS			15RS		100	
46				16RS		100	
48				17RS		100	
50							
52	SP-SAND, compact, very fine grained, poorly graded, grey, wet	204.42		18RS		100	
54				19RS		100	
56				20RS		100	
58				21RS		100	
60	- fine grained at 60.05m BGS			22RS		100	
62				23RS		100	
64							
66	- trace gravel, trace to with silt at 65.53m BGS						
68							
70	END OF BOREHOLE @ 69.19m BGS	186.59	<p style="font-size: small;">BENTONITE PELLETS SAND PACK 51mm PVC WELL SCREEN</p>				
72			<p><b>WELL DETAILS</b></p> <p>Screened interval: 189.64 to 186.59m 66.75 to 69.80m BGS</p> <p>Length: 3.05m Diameter: 51mm Slot Size: 0.010 Material: PVC SCH 80</p> <p>Seal: 190.86 to 190.25m 65.53 to 66.14m BGS Material: BENTONITE PELLETS</p> <p>Sand Pack: 190.25 to 186.59m 66.14 to 69.80m BGS Material: SAND</p>				
74							
76							
78							
80							

**NOTES:** MEASURING POINT ELEVATIONS MAY CHANGE; REFER TO CURRENT ELEVATION TABLE

OVERBURDEN LOG 11155365-WI.GPJ GHD\_Corp 15/6/18



# STRATIGRAPHIC AND INSTRUMENTATION LOG (OVERBURDEN)

PROJECT NAME: CRH-TEEDON PIT  
 PROJECT NUMBER: 11155365  
 CLIENT: CRH CANADA GROUP INC  
 LOCATION: TINY TOWNSHIP, ONTARIO

HOLE DESIGNATION: MW6-18  
 DATE COMPLETED: 29 March 2018  
 DRILLING METHOD: SONIC  
 FIELD PERSONNEL: K. VANDER MEULEN

DEPTH m BGS	STRATIGRAPHIC DESCRIPTION & REMARKS	ELEV. m	MONITORING WELL	SAMPLE			
				NUMBER	INTERVAL	REC (%)	
	NORTHING: 4944916.15 EASTING: 591778.54	TOP OF RISER GROUND SURFACE	268.43 267.60				
2	SM-SILTY SAND (FILL), little gravel, compact, very fine grained, poorly graded, brown, moist		CONCRETE	1RS		60	
4	ML-SILT, trace clay, trace very fine sand, compact, brown, moist - no clay or sand at 3.66m BGS  - dilatant, wet at 6.10m BGS	264.86	BENTONITE GROUT	2RS		100	
6			51mm PVC WELL CASING	3RS		100	
8			152mm BOREHOLE	4RS		100	
10				5RS		100	
12	SM-SILTY SAND, compact, very fine grained, poorly graded, brown, wet	256.02		6RS		100	
14	ML-SILT, trace clay, compact, dilatant, grey, wet	255.10		7RS		100	
16	- with clay, very moist to wet at 16.76m BGS			8RS		100	
18	- trace clay at 17.98m BGS			9RS		100	
20	- with clay at 20.42m BGS			10RS		100	
22				11RS		100	
24				12RS		100	
26	CL-SILTY CLAY, stiff, low plasticity, grey, wet - medium plasticity at 25.91m BGS	242.30		13RS		100	
28				14RS		100	
30							
32							
34	SP-SAND, with coarse gravel, compact, medium grained, poorly graded, grey, wet - trace gravel, fine grained at 33.83m BGS	234.38					
36							
38							
40	- trace silt, very fine grained at 39.62m BGS						

**NOTES:** MEASURING POINT ELEVATIONS MAY CHANGE; REFER TO CURRENT ELEVATION TABLE

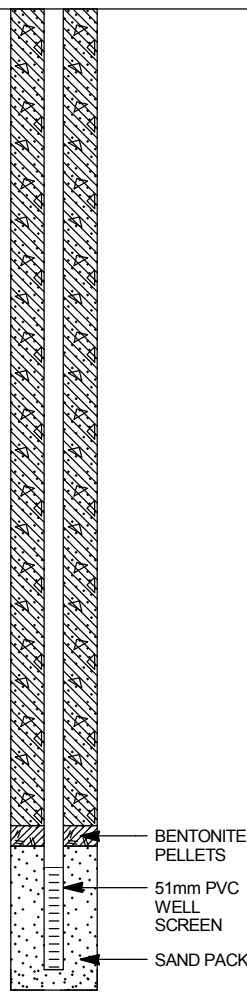
OVERBURDEN LOG 11155365-WI.GPJ GHD\_Corp 15/6/18



# STRATIGRAPHIC AND INSTRUMENTATION LOG (OVERBURDEN)

PROJECT NAME: CRH-TEEDON PIT  
 PROJECT NUMBER: 11155365  
 CLIENT: CRH CANADA GROUP INC  
 LOCATION: TINY TOWNSHIP, ONTARIO

HOLE DESIGNATION: MW6-18  
 DATE COMPLETED: 29 March 2018  
 DRILLING METHOD: SONIC  
 FIELD PERSONNEL: K. VANDER MEULEN

DEPTH m BGS	STRATIGRAPHIC DESCRIPTION & REMARKS	ELEV. m	MONITORING WELL	SAMPLE			
				NUMBER	INTERVAL	REC (%)	
42		224.93	 <p style="font-size: small;">BENTONITE PELLETS 51mm PVC WELL SCREEN SAND PACK</p> <p><b>WELL DETAILS</b>            Screened interval:            201.15 to 198.11m            66.45 to 69.49m BGS            Length: 3.05m            Diameter: 51mm            Slot Size: 0.010            Material: PVC SCH 80            Seal:            202.37 to 201.76m            65.23 to 65.84m BGS            Material: BENTONITE PELLETS            Sand Pack:            201.76 to 197.50m            65.84 to 70.10m BGS            Material: SAND</p>	15RS		100	
	ML-SILT, dense, dilatant, grey, wet	224.17		16RS		100	
44	SP-SAND, trace silt, compact, very fine grained, poorly graded, grey, wet			17RS		100	
46				18RS		100	
48				19RS		100	
50				20RS		100	
52	ML-SILT, compact, dilatant, grey, wet	215.78		21RS		100	
54				22RS		100	
56	SP-SAND, trace silt, compact, very fine grained, poorly graded, grey, wet, dark layering	212.13		23RS		100	
58				24RS		100	
60							
62	- fine grained, grey at 61.87m BGS - fine grained, brown at 62.79m BGS						
64							
66							
68							
70	END OF BOREHOLE @ 70.10m BGS	197.50					
72							
74							
76							
78							
80							

**NOTES:** MEASURING POINT ELEVATIONS MAY CHANGE; REFER TO CURRENT ELEVATION TABLE

OVERBURDEN LOG 11155365-WI.GPJ GHD\_Corp 15/6/18



# STRATIGRAPHIC AND INSTRUMENTATION LOG (OVERBURDEN)

PROJECT NAME: CRH-TEEDON PIT  
 PROJECT NUMBER: 11155365  
 CLIENT: CRH CANADA GROUP INC  
 LOCATION: TINY TOWNSHIP, ONTARIO

HOLE DESIGNATION: MW6R-18  
 DATE COMPLETED: October 2, 2018  
 DRILLING METHOD: SONIC  
 FIELD PERSONNEL: G. LAGOS

DEPTH m BGS	STRATIGRAPHIC DESCRIPTION & REMARKS	ELEV. m	MONITORING WELL	SAMPLE			
				NUMBER	INTERVAL	REC (%)	
	NORTHING: 4944916.96 EASTING: 591780.6	TOP OF RISER GROUND SURFACE 268.20 267.57					
2	SM-SILTY SAND (FILL), little gravel, compact, very fine grained, poorly graded, brown, moist		CONCRETE				
4	ML-SILT, trace clay, trace very fine sand, compact, brown, moist - no clay or sand at 3.66m BGS  - dilatant, wet at 6.10m BGS	264.82	BENTONITE GROUT				
6			51mm PVC WELL CASING				
8			152mm BOREHOLE				
10							
12	SM-SILTY SAND, compact, very fine grained, poorly graded, brown, wet	255.99 255.07					
14	ML-SILT, trace clay, compact, dilatant, grey, wet						
16	- with clay, very moist to wet at 16.76m BGS						
18	- trace clay at 17.98m BGS						
20	- with clay at 20.42m BGS						
22							
24							
26	CL-SILTY CLAY, stiff, low plasticity, grey, wet - medium plasticity at 25.91m BGS	242.27					
28							
30							
32							
34	SP-SAND, with coarse gravel, compact, medium grained, poorly graded, grey, wet - trace gravel, fine grained at 33.83m BGS	234.34					
36							
38							
40	- trace silt, very fine grained at 39.62m BGS						

**NOTES:** MEASURING POINT ELEVATIONS MAY CHANGE; REFER TO CURRENT ELEVATION TABLE

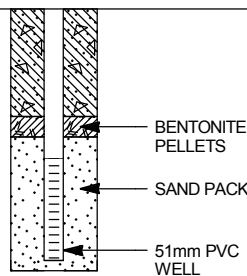
OVERBURDEN LOG 11155365-WI.GPJ GHD\_Corp 10/23/18



# STRATIGRAPHIC AND INSTRUMENTATION LOG (OVERBURDEN)

PROJECT NAME: CRH-TEEDON PIT  
 PROJECT NUMBER: 11155365  
 CLIENT: CRH CANADA GROUP INC  
 LOCATION: TINY TOWNSHIP, ONTARIO

HOLE DESIGNATION: MW6R-18  
 DATE COMPLETED: October 2, 2018  
 DRILLING METHOD: SONIC  
 FIELD PERSONNEL: G. LAGOS

DEPTH m BGS	STRATIGRAPHIC DESCRIPTION & REMARKS	ELEV. m	MONITORING WELL	SAMPLE				
				NUMBER	INTERVAL	REC (%)		
42		224.90	 <p><b>WELL DETAILS</b>            Screened interval:            222.15 to 219.10m            45.42 to 48.46m BGS            Length: 3.05m            Diameter: 51mm            Slot Size: 0.010            Material: PVC            Seal:            223.37 to 222.76m            44.20 to 44.81m BGS            Material: BENTONITE PELLETS            Sand Pack:            222.76 to 218.80m            44.81 to 48.77m BGS            Material: SAND</p>					
	ML-SILT, dense, dilatant, grey, wet	224.13						
44	SP-SAND, trace silt, compact, very fine grained, poorly graded, grey, wet							
46								
48	END OF BOREHOLE @ 48.77m BGS	218.80						
50								
52								
54								
56								
58								
60								
62								
64								
66								
68								
70								
72								
74								
76								
78								
80								

**NOTES:** MEASURING POINT ELEVATIONS MAY CHANGE; REFER TO CURRENT ELEVATION TABLE

OVERBURDEN LOG 11155365-WI.GPJ GHD\_Corp 10/23/18





# STRATIGRAPHIC AND INSTRUMENTATION LOG (OVERBURDEN)

PROJECT NAME: CRH-TEEDON PIT  
 PROJECT NUMBER: 11155365  
 CLIENT: CRH CANADA GROUP INC  
 LOCATION: TINY TOWNSHIP, ONTARIO

HOLE DESIGNATION: MW7-18  
 DATE COMPLETED: 9 April 2018  
 DRILLING METHOD: SONIC  
 FIELD PERSONNEL: K. VANDER MEULEN

DEPTH m BGS	STRATIGRAPHIC DESCRIPTION & REMARKS	ELEV. m	MONITORING WELL	SAMPLE			
				NUMBER	INTERVAL	REC (%)	
	NORTHING: 4944937.13 EASTING: 591953.92	TOP OF RISER GROUND SURFACE 267.56 266.83					
2	SP-SAND (FILL), with silt, compact, very fine grained, poorly graded, brown, moist		<p><b>WELL DETAILS</b>            Screened interval:            247.94 to 244.89m            18.90 to 21.95m BGS            Length: 3.05m            Diameter: 51mm            Slot Size: 0.010            Material: PVC SCH 80            Seal:            249.16 to 248.55m            17.68 to 18.29m BGS            Material: BENTONITE PELLETS            Sand Pack:            248.55 to 242.75m            18.29 to 24.08m BGS            Material: SAND</p>	1RS		67	
4	SM-SILTY SAND, loose, very fine grained, poorly graded, dilatant, brown, wet	262.57		2RS		60	
6				3RS		100	
8	ML-SILT, trace very fine sand, loose, dilatant, grey, wet	258.91		4RS		100	
10				5RS		100	
14	SM-SILTY SAND, compact, very fine grained, slightly dilatant, poorly graded, grey, wet	253.42 252.51		6RS		100	
16	ML-SILT, compact, dilatant, grey, wet - trace to with clay at 15.85m BGS			7RS		100	
18				8RS		100	
20	SM-SILTY SAND, compact, very fine grained, slightly dilatant, poorly graded, grey, wet	247.63					
22	ML-SILT, with clay, compact, grey, wet	244.89					
24	END OF BOREHOLE @ 24.08m BGS	242.75					
26							
28							
30							
32							
34							
36							
38							
40							

**NOTES:** MEASURING POINT ELEVATIONS MAY CHANGE; REFER TO CURRENT ELEVATION TABLE

OVERBURDEN LOG 11155365-WI.GPJ GHD\_Corp 15/6/18



# STRATIGRAPHIC AND INSTRUMENTATION LOG (OVERBURDEN)

PROJECT NAME: CRH-TEEDON PIT  
 PROJECT NUMBER: 11155365  
 CLIENT: CRH CANADA GROUP INC  
 LOCATION: TINY TOWNSHIP, ONTARIO

HOLE DESIGNATION: MW8-18  
 DATE COMPLETED: 11 June 2018  
 DRILLING METHOD: SONIC  
 FIELD PERSONNEL: S. MOLONEY

DEPTH m BGS	STRATIGRAPHIC DESCRIPTION & REMARKS	ELEV. m	MONITORING WELL	SAMPLE				
				NUMBER	INTERVAL	REC (%)		
	NORTHING: 4944303.17 EASTING: 590518.91	TOP OF RISER GROUND SURFACE 245.88 245.35						
0.5	SW-SAND, with fine and coarse subrounded gravel, trace cobble, fine grained, well graded, light brown, dry		CONCRETE	1RS		100		
1.0			BENTONITE GROUT	2RS		100		
2.5	SP-SAND, fine grained, poorly graded, brown, dry	242.91	51mm PVC WELL CASING	3RS		100		
3.0			152mm BOREHOLE	4RS		100		
7.5	SW-SAND, with fine gravel, trace coarse subrounded gravel, fine grained, brown, dry	237.73						
8.0								
8.5								
9.0								
9.5								

**NOTES:** MEASURING POINT ELEVATIONS MAY CHANGE; REFER TO CURRENT ELEVATION TABLE

OVERBURDEN LOG 11155365-WI.GPJ GHD\_Corp 15/6/18



# STRATIGRAPHIC AND INSTRUMENTATION LOG (OVERBURDEN)

PROJECT NAME: CRH-TEEDON PIT  
 PROJECT NUMBER: 11155365  
 CLIENT: CRH CANADA GROUP INC  
 LOCATION: TINY TOWNSHIP, ONTARIO

HOLE DESIGNATION: MW8-18  
 DATE COMPLETED: 11 June 2018  
 DRILLING METHOD: SONIC  
 FIELD PERSONNEL: S. MOLONEY

DEPTH m BGS	STRATIGRAPHIC DESCRIPTION & REMARKS	ELEV. m	MONITORING WELL	SAMPLE			
				NUMBER	INTERVAL	REC (%)	
<div style="display: flex; align-items: center;"> <div style="width: 100%; border-right: 1px solid black; padding-right: 5px;"> <p style="font-size: small; margin: 0;">10.5</p> <p style="font-size: small; margin: 0;">11.0</p> <p style="font-size: small; margin: 0;">11.5</p> <p style="font-size: small; margin: 0;">12.0</p> <p style="font-size: small; margin: 0;">12.5</p> <p style="font-size: small; margin: 0;">13.0</p> <p style="font-size: small; margin: 0;">13.5</p> <p style="font-size: small; margin: 0;">14.0</p> <p style="font-size: small; margin: 0;">14.5</p> <p style="font-size: small; margin: 0;">15.0</p> <p style="font-size: small; margin: 0;">15.5</p> <p style="font-size: small; margin: 0;">16.0</p> <p style="font-size: small; margin: 0;">16.5</p> <p style="font-size: small; margin: 0;">17.0</p> <p style="font-size: small; margin: 0;">17.5</p> <p style="font-size: small; margin: 0;">18.0</p> <p style="font-size: small; margin: 0;">18.5</p> <p style="font-size: small; margin: 0;">19.0</p> <p style="font-size: small; margin: 0;">19.5</p> </div> <div style="width: 5%; text-align: center; border-right: 1px solid black; padding-right: 5px;"> <p style="font-size: small; margin: 0;">228.89</p> </div> <div style="width: 90%; padding-left: 5px;"> </div> </div>	<p style="font-size: small; margin: 0;">- medium grained, with fine grained, wet at 14.63m BGS</p> <p style="font-size: small; margin: 0;">GP-SANDY GRAVEL/GRAVEL, with fine sand, fine and coarse subrounded to subangular gravel, well graded, grey, wet</p>	<p style="font-size: small; margin: 0;">BENTONITE PELLETS</p> <p style="font-size: small; margin: 0;">SAND PACK</p> <p style="font-size: small; margin: 0;">51mm PVC WELL</p>	<p style="font-size: small; margin: 0;">5RS</p> <p style="font-size: small; margin: 0;">6RS</p> <p style="font-size: small; margin: 0;">7RS</p> <p style="font-size: small; margin: 0;">8RS</p>	<p style="font-size: small; margin: 0;">75</p> <p style="font-size: small; margin: 0;">20</p> <p style="font-size: small; margin: 0;">100</p> <p style="font-size: small; margin: 0;">100</p>			

**NOTES:** MEASURING POINT ELEVATIONS MAY CHANGE; REFER TO CURRENT ELEVATION TABLE

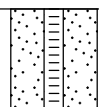
OVERBURDEN LOG 11155365-WI.GPJ GHD\_Corp 15/6/18



# STRATIGRAPHIC AND INSTRUMENTATION LOG (OVERBURDEN)

PROJECT NAME: CRH-TEEDON PIT  
 PROJECT NUMBER: 11155365  
 CLIENT: CRH CANADA GROUP INC  
 LOCATION: TINY TOWNSHIP, ONTARIO

HOLE DESIGNATION: MW8-18  
 DATE COMPLETED: 11 June 2018  
 DRILLING METHOD: SONIC  
 FIELD PERSONNEL: S. MOLONEY

DEPTH m BGS	STRATIGRAPHIC DESCRIPTION & REMARKS	ELEV. m	MONITORING WELL	SAMPLE			
				NUMBER	INTERVAL	REC (%)	
20.5  21.0  21.5  22.0  22.5  23.0  23.5  24.0  24.5  25.0  25.5  26.0  26.5  27.0  27.5  28.0  28.5  29.0  29.5	END OF BOREHOLE @ 20.73m BGS	224.62	SCREEN  				
			<b>WELL DETAILS</b> Screened interval: 227.67 to 224.62m 17.68 to 20.73m BGS Length: 3.05m Diameter: 51mm Slot Size: 0.010 Material: PVC Seal: 229.19 to 228.28m 16.15 to 17.07m BGS Material: BENTONITE CHIPS Sand Pack: 228.28 to 224.62m 17.07 to 20.73m BGS Material: SAND				

**NOTES:** MEASURING POINT ELEVATIONS MAY CHANGE; REFER TO CURRENT ELEVATION TABLE

OVERBURDEN LOG 11155365-WI.GPJ GHD\_Corp 15/6/18



# STRATIGRAPHIC AND INSTRUMENTATION LOG (OVERBURDEN)

PROJECT NAME: CRH-TEEDON PIT  
 PROJECT NUMBER: 11155365  
 CLIENT: CRH CANADA GROUP INC  
 LOCATION: TINY TOWNSHIP, ONTARIO

HOLE DESIGNATION: MW9-18  
 DATE COMPLETED: 6 June 2018  
 DRILLING METHOD: SONIC  
 FIELD PERSONNEL: Shawn Moloney

DEPTH m BGS	STRATIGRAPHIC DESCRIPTION & REMARKS	ELEV. m	MONITORING WELL	SAMPLE				
				NUMBER	INTERVAL	REC (%)		
	NORTHING: 4944734.11 EASTING: 591302.29	TOP OF RISER GROUND SURFACE	292.50 291.58					
0.5	TOPSOIL, sandy silt, loose, fine grained sand, dark brown, dry		CONCRETE					
1.0	SM- SAND, with silt, with to trace fine and coarse gravel, loose, fine grained, well graded, brown, dry	290.97		1RS		56		
2.5			BENTONITE GROUT					
3.0	SW- SAND, with gravel, trace silt, compact, fine grained, fine and coarse subrounded gravel, light brown, dry	288.84						
3.5	- gravelly sand, fine to medium sand from 3.61 to 6.48m BGS		51 mm PVC WELL CASING	2RS		100		
5.0			152 mm BOREHOLE					
6.5	- silty sand, with gravel, with cobbles seam, fine grained, dry from 6.50 to 7.32m BGS			3RS		100		
7.5								
8.5	fine to medium grained, fine gravel, brown			4RS		100		
9.0	fine grained, fine and coarse gravel, trace cobbles, light grey	282.74						
9.5	- silt seam, very fine grained, light grey from 9.91							

**NOTES:** MEASURING POINT ELEVATIONS MAY CHANGE; REFER TO CURRENT ELEVATION TABLE  
 WATER FOUND ∇

OVERBURDEN LOG 11155365-WI.GPJ GHD\_Corp 15/6/18



# STRATIGRAPHIC AND INSTRUMENTATION LOG (OVERBURDEN)

PROJECT NAME: CRH-TEEDON PIT  
 PROJECT NUMBER: 11155365  
 CLIENT: CRH CANADA GROUP INC  
 LOCATION: TINY TOWNSHIP, ONTARIO

HOLE DESIGNATION: MW9-18  
 DATE COMPLETED: 6 June 2018  
 DRILLING METHOD: SONIC  
 FIELD PERSONNEL: Shawn Moloney

DEPTH m BGS	STRATIGRAPHIC DESCRIPTION & REMARKS	ELEV. m	MONITORING WELL	SAMPLE				
				NUMBER	INTERVAL	REC (%)		
10.5	to 11.05m BGS			5RS		100		
11.0								
11.5								
12.0	- with to trace gravel, trace cobbles, grey at 11.89m BGS	279.70						
12.5								
13.0	SP- SAND, fine grained, poorly graded, brown/grey, dry	278.68		6RS		100		
13.5								
14.0								
14.5	- moist at 14.68m BGS							
15.0	SW- SAND with GRAVEL, trace cobble, fine grained sand, fine and coarse grained gravel, well graded, brown, moist	276.60						
15.5	- dry at 15.70m BGS							
16.0	- trace gravel seam, moist from 16.15 to 16.76m BGS							
16.5				7RS		100		
17.0								
17.5	- gravelly sand, moist at 17.73m BGS							
18.0								
18.5								
19.0	- with gravel, grey at 18.90m BGS							
19.5				8RS		100		

NOTES: MEASURING POINT ELEVATIONS MAY CHANGE; REFER TO CURRENT ELEVATION TABLE  
 WATER FOUND ∇



# STRATIGRAPHIC AND INSTRUMENTATION LOG (OVERBURDEN)

PROJECT NAME: CRH-TEEDON PIT

HOLE DESIGNATION: MW9-18

PROJECT NUMBER: 11155365

DATE COMPLETED: 6 June 2018

CLIENT: CRH CANADA GROUP INC

DRILLING METHOD: SONIC

LOCATION: TINY TOWNSHIP, ONTARIO

FIELD PERSONNEL: Shawn Moloney

DEPTH m BGS	STRATIGRAPHIC DESCRIPTION & REMARKS	ELEV. m	MONITORING WELL		SAMPLE				
					NUMBER	INTERVAL	REC (%)		
20.5									
21.0									
21.5									
22.0									
22.5					9RS		100		
23.0									
23.5									
24.0									
24.5									
25.0									
25.5	- trace silt seam, fine to very fine grained from 25.60 to 26.44m BGS				10RS		100		
26.0									
26.5									
27.0									
27.5									
28.0									
28.5	- trace silt seam, fine to very fine grained from 28.65 to 29.03m BGS				11RS		100		
29.0									
29.5									

**NOTES:** MEASURING POINT ELEVATIONS MAY CHANGE; REFER TO CURRENT ELEVATION TABLE  
WATER FOUND ∇

OVERBURDEN LOG 11155365-WI.GPJ GHD\_Corp 15/6/18



# STRATIGRAPHIC AND INSTRUMENTATION LOG (OVERBURDEN)

PROJECT NAME: CRH-TEEDON PIT  
PROJECT NUMBER: 11155365  
CLIENT: CRH CANADA GROUP INC  
LOCATION: TINY TOWNSHIP, ONTARIO

HOLE DESIGNATION: MW9-18  
DATE COMPLETED: 6 June 2018  
DRILLING METHOD: SONIC  
FIELD PERSONNEL: Shawn Moloney

DEPTH m BGS	STRATIGRAPHIC DESCRIPTION & REMARKS	ELEV. m	MONITORING WELL	SAMPLE			
				NUMBER	INTERVAL	REC (%)	
30.5	- with to trace silt, fine and coarse subrounded gravel, subrounded, well graded, light grey at 30.91m BGS			12RS		100	
31.0							
31.5							
32.0							
32.5							
33.0							
33.5							
34.0							
34.5							
35.0							
35.5	- gravelly sand to sand with gravel, grey at 36.27m BGS			13RS		70	
36.0							
36.5							
37.0							
37.5							
38.0							
38.5							
39.0							
39.5							
	- silty sand, with gravel, very fine grained, light						

OVERBURDEN LOG 11155365-WI.GPJ GHD\_Corp 15/6/18

NOTES: MEASURING POINT ELEVATIONS MAY CHANGE; REFER TO CURRENT ELEVATION TABLE  
WATER FOUND ∇





## STRATIGRAPHIC AND INSTRUMENTATION LOG (OVERBURDEN)

PROJECT NAME: CRH-TEEDON PIT  
 PROJECT NUMBER: 11155365  
 CLIENT: CRH CANADA GROUP INC  
 LOCATION: TINY TOWNSHIP, ONTARIO

HOLE DESIGNATION: MW9-18  
 DATE COMPLETED: 6 June 2018  
 DRILLING METHOD: SONIC  
 FIELD PERSONNEL: Shawn Moloney

DEPTH m BGS	STRATIGRAPHIC DESCRIPTION & REMARKS	ELEV. m	MONITORING WELL	SAMPLE					
				NUMBER	INTERVAL	REC (%)			
40.5 41.0 41.5 42.0 42.5 43.0 43.5 44.0 44.5 45.0 45.5 46.0 46.5 47.0 47.5 48.0 48.5 49.0 49.5	grey at 39.93m BGS  - sand, with gravel, medium grained, brown-grey at 42.37m BGS  - fine grained at 42.98m BGS  - gravelly sand seam, trace cobbles, fine grained, fine and coarse subrounded to subangular gravel, well graded from 43.48 to 44.20m BGS  - medium grained, with fine grained at 44.88m BGS				15RS	100			
					16RS	100			
					17RS	100			

**NOTES:** MEASURING POINT ELEVATIONS MAY CHANGE; REFER TO CURRENT ELEVATION TABLE  
 WATER FOUND ▼

OVERBURDEN LOG 11155365-WI.GPJ GHD\_Corp 15/6/18



# STRATIGRAPHIC AND INSTRUMENTATION LOG (OVERBURDEN)

PROJECT NAME: CRH-TEEDON PIT  
PROJECT NUMBER: 11155365  
CLIENT: CRH CANADA GROUP INC  
LOCATION: TINY TOWNSHIP, ONTARIO

HOLE DESIGNATION: MW9-18  
DATE COMPLETED: 6 June 2018  
DRILLING METHOD: SONIC  
FIELD PERSONNEL: Shawn Moloney

DEPTH m BGS	STRATIGRAPHIC DESCRIPTION & REMARKS	ELEV. m	MONITORING WELL	SAMPLE			
				NUMBER	INTERVAL	REC (%)	
50.5				18RS		100	
51.0	- gravel, with sand seam from 50.98 to 51.21m BGS						
51.5							
52.0	- fine grained at 52.17m BGS						
52.5							
53.0				19RS		100	
53.5							
54.0							
54.5	- wet at 54.56m BGS						
55.0	- fine grained sand seam, poorly graded, brown-grey from 55.02 to 56.08m BGS						
55.5							
56.0	- medium grained at 56.08m BGS			20RS		100	
56.5							
57.0							
57.5							
58.0							
58.5							
59.0							
59.5				21RS		100	

NOTES: MEASURING POINT ELEVATIONS MAY CHANGE; REFER TO CURRENT ELEVATION TABLE  
WATER FOUND ∇

OVERBURDEN LOG 11155365-WI.GPJ GHD\_Corp 15/6/18



# STRATIGRAPHIC AND INSTRUMENTATION LOG (OVERBURDEN)

PROJECT NAME: CRH-TEEDON PIT  
 PROJECT NUMBER: 11155365  
 CLIENT: CRH CANADA GROUP INC  
 LOCATION: TINY TOWNSHIP, ONTARIO

HOLE DESIGNATION: MW9-18  
 DATE COMPLETED: 6 June 2018  
 DRILLING METHOD: SONIC  
 FIELD PERSONNEL: Shawn Moloney

DEPTH m BGS	STRATIGRAPHIC DESCRIPTION & REMARKS	ELEV. m	MONITORING WELL	SAMPLE			
				NUMBER	INTERVAL	REC (%)	
60.5 61.0 61.5 62.0 62.5 63.0 63.5 64.0 64.5 65.0 65.5 66.0 66.5 67.0 67.5 68.0 68.5 69.0 69.5	<div style="border: 1px solid black; padding: 5px; margin-bottom: 10px;"> </div> <p>END OF BOREHOLE @ 60.66m BGS</p>	230.93	<div style="border: 1px solid black; padding: 5px; margin-bottom: 10px;"> </div> <p><u>WELL DETAILS</u>            Screened interval:              233.98 to 230.93m              57.61 to 60.66m BGS            Length: 3.05m            Diameter: 51mm            Slot Size: 10            Material: Sch. 80 PVC            Seal:              236.11 to 234.59m              55.47 to 57.00m BGS            Material: BENTONITE PELLETS            Sand Pack:              234.59 to 230.93m              57.00 to 60.66m BGS            Material: SILICA SAND No.2            -----            Seal:              290.97 to 234.59m              0.61 to 57.00m BGS            Material: BENTONITE GROUT            -----            Seal:              291.58 to 290.97m              0.00 to 0.61m BGS            Material: CONCRETE</p>				

**NOTES:** MEASURING POINT ELEVATIONS MAY CHANGE; REFER TO CURRENT ELEVATION TABLE  
 WATER FOUND ▼

OVERBURDEN LOG 11155365-WI.GPJ GHD\_Corp 15/6/18



# STRATIGRAPHIC AND INSTRUMENTATION LOG (OVERBURDEN)

PROJECT NAME: CRH-TEEDON PIT  
 PROJECT NUMBER: 11155365  
 CLIENT: CRH CANADA GROUP INC  
 LOCATION: TINY TOWNSHIP, ONTARIO

HOLE DESIGNATION: MW10D-18  
 DATE COMPLETED: 6 June 2018  
 DRILLING METHOD: SONIC  
 FIELD PERSONNEL: S. MOLONEY

DEPTH m BGS	STRATIGRAPHIC DESCRIPTION & REMARKS	ELEV. m	MONITORING WELL	SAMPLE			
				NUMBER	INTERVAL	REC (%)	
	NORTHING: 4945177 EASTING: 591741.82	TOP OF RISER GROUND SURFACE 260.52 259.55					
0.5  1.0  1.5  2.0  2.5  3.0  3.5  4.0  4.5  5.0  5.5  6.0  6.5  7.0  7.5  8.0  8.5  9.0  9.5	<p>TOPSOIL, with silt, trace sand, trace organics, dark brown, moist</p> <p>ML-SILT, trace very fine sand, medium dilatancy, brown, moist to wet - highly dilatant, wet at 0.69m BGS</p> <p>- no sand, grey at 1.22m BGS</p> <p>- trace very fine sand at 3.56m BGS</p> <p>- trace to no sand at 4.27m BGS</p> <p>- trace very fine sand at 5.13m BGS</p> <p>- with clay seam, hard, low plasticity at 7.82m BGS</p>	<p>259.39</p>	<p>CONCRETE</p> <p>BENTONITE GROUT</p> <p>51mm PVC WELL CASING</p> <p>152mm BOREHOLE</p>	<p>1RS</p> <p>2RS</p> <p>3RS</p>	<p>100</p> <p>100</p> <p>100</p>		

**NOTES:** MEASURING POINT ELEVATIONS MAY CHANGE; REFER TO CURRENT ELEVATION TABLE

OVERBURDEN LOG 11155365-WI.GPJ GHD\_Corp 15/6/18



# STRATIGRAPHIC AND INSTRUMENTATION LOG (OVERBURDEN)

PROJECT NAME: CRH-TEEDON PIT  
 PROJECT NUMBER: 11155365  
 CLIENT: CRH CANADA GROUP INC  
 LOCATION: TINY TOWNSHIP, ONTARIO

HOLE DESIGNATION: MW10D-18  
 DATE COMPLETED: 6 June 2018  
 DRILLING METHOD: SONIC  
 FIELD PERSONNEL: S. MOLONEY

DEPTH m BGS	STRATIGRAPHIC DESCRIPTION & REMARKS	ELEV. m	MONITORING WELL	SAMPLE			
				NUMBER	INTERVAL	REC (%)	
10.5				4RS		100	
11.0							
11.5							
12.0							
12.5							
13.0				5RS		100	
13.5							
14.0							
14.5							
15.0							
15.5	- trace very small clay lenses 1 to 2cm, medium dilatancy at 15.24m BGS						
16.0				6RS		100	
16.5							
17.0							
17.5							
18.0							
18.5							
19.0				7RS		100	
19.5							

**NOTES:** MEASURING POINT ELEVATIONS MAY CHANGE; REFER TO CURRENT ELEVATION TABLE

OVERBURDEN LOG 11155365-WI.GPJ GHD\_Corp 15/6/18



# STRATIGRAPHIC AND INSTRUMENTATION LOG (OVERBURDEN)

PROJECT NAME: CRH-TEEDON PIT  
 PROJECT NUMBER: 11155365  
 CLIENT: CRH CANADA GROUP INC  
 LOCATION: TINY TOWNSHIP, ONTARIO

HOLE DESIGNATION: MW10D-18  
 DATE COMPLETED: 6 June 2018  
 DRILLING METHOD: SONIC  
 FIELD PERSONNEL: S. MOLONEY

DEPTH m BGS	STRATIGRAPHIC DESCRIPTION & REMARKS	ELEV. m	MONITORING WELL	SAMPLE			
				NUMBER	INTERVAL	REC (%)	
20.5 21.0 21.5 22.0 22.5 23.0 23.5 24.0 24.5 25.0 25.5 26.0 26.5 27.0 27.5 28.0 28.5 29.0 29.5	<p style="text-align: center;">- with clay seam, hard, low plasticity, moist to dry from 23.01 to 23.32m BGS</p> <p style="text-align: center;">END OF BOREHOLE @ 25.91m BGS</p>	<p style="text-align: center;">233.64</p>	<p style="text-align: center;">BENTONITE CHIPS</p> <p style="text-align: center;">SAND PACK</p> <p style="text-align: center;">51mm PVC WELL SCREEN</p>	<p style="text-align: center;">8RS</p> <p style="text-align: center;">9RS</p>	<p style="text-align: center;">100</p> <p style="text-align: center;">100</p>		
<p><b>WELL DETAILS</b>            Screened interval:            236.69 to 233.64m            22.86 to 25.91m BGS            Length: 3.05m            Diameter: 51mm            Slot Size: 0.010            Material: PVC            Seal:            238.82 to 237.30m            20.73 to 22.25m BGS            Material: BENTONITE CHIPS            Sand Pack:            237.30 to 233.64m            22.25 to 25.91m BGS            Material: SAND</p>							

**NOTES:** MEASURING POINT ELEVATIONS MAY CHANGE; REFER TO CURRENT ELEVATION TABLE

OVERBURDEN LOG 11155365-WI.GPJ GHD\_Corp 15/6/18



# STRATIGRAPHIC AND INSTRUMENTATION LOG (OVERBURDEN)

PROJECT NAME: CRH-TEEDON PIT  
 PROJECT NUMBER: 11155365  
 CLIENT: CRH CANADA GROUP INC  
 LOCATION: TINY TOWNSHIP, ONTARIO

HOLE DESIGNATION: MW10S-18  
 DATE COMPLETED: 6 June 2018  
 DRILLING METHOD: SONIC  
 FIELD PERSONNEL: S. MOLONEY

DEPTH m BGS	STRATIGRAPHIC DESCRIPTION & REMARKS	ELEV. m	MONITORING WELL	SAMPLE			
				NUMBER	INTERVAL	REC (%)	
	NORTHING: 4945177.24 EASTING: 591743.06	TOP OF RISER GROUND SURFACE 260.42 259.44					
0.5  1.0  1.5  2.0  2.5  3.0  3.5  4.0  4.5  5.0  5.5  6.0  6.5  7.0  7.5  8.0  8.5  9.0  9.5	<p>TOPSOIL, with silt, trace sand, trace organics, dark brown, moist</p> <p>ML-SILT, trace very fine sand, medium dilatancy, brown, moist to wet - highly dilatant, wet at 0.69m BGS</p> <p>- no sand, grey at 1.22m BGS</p> <p>- trace very fine sand at 3.56m BGS</p> <p>- trace to no sand at 4.27m BGS</p> <p>- trace very fine sand at 5.13m BGS</p> <p>- with clay seam, hard, low plasticity at 7.82m BGS</p>	<p>259.28</p>	<p>CONCRETE</p> <p>BENTONITE GROUT</p> <p>51mm PVC WELL CASING</p> <p>152mm BOREHOLE</p> <p>BENTONITE PELLETS</p> <p>SAND PACK</p> <p>51mm PVC WELL SCREEN</p>	<p>1RS</p> <p>2RS</p> <p>3RS</p> <p>4RS</p>	<p>80</p> <p>100</p> <p>100</p> <p>100</p>		

**NOTES:** MEASURING POINT ELEVATIONS MAY CHANGE; REFER TO CURRENT ELEVATION TABLE

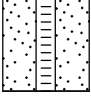
OVERBURDEN LOG 11155365-WI.GPJ GHD\_Corp 15/6/18



# STRATIGRAPHIC AND INSTRUMENTATION LOG (OVERBURDEN)

PROJECT NAME: CRH-TEEDON PIT  
 PROJECT NUMBER: 11155365  
 CLIENT: CRH CANADA GROUP INC  
 LOCATION: TINY TOWNSHIP, ONTARIO

HOLE DESIGNATION: MW10S-18  
 DATE COMPLETED: 6 June 2018  
 DRILLING METHOD: SONIC  
 FIELD PERSONNEL: S. MOLONEY

DEPTH m BGS	STRATIGRAPHIC DESCRIPTION & REMARKS	ELEV. m	MONITORING WELL	SAMPLE			
				NUMBER	INTERVAL	REC (%)	
10.5 11.0 11.5 12.0 12.5 13.0 13.5 14.0 14.5 15.0 15.5 16.0 16.5 17.0 17.5 18.0 18.5 19.0 19.5	END OF BOREHOLE @ 10.67m BGS	248.77	 <p><b>WELL DETAILS</b>            Screened interval:              251.82 to 248.77m              7.62 to 10.67m BGS            Length: 3.05m            Diameter: 51mm            Slot Size: 0.010            Material: PVC            Seal:              253.34 to 252.43m              6.10 to 7.01m BGS            Material: BENTONITE CHIPS            Sand Pack:              252.43 to 248.77m              7.01 to 10.67m BGS            Material: SAND</p>				

**NOTES:** MEASURING POINT ELEVATIONS MAY CHANGE; REFER TO CURRENT ELEVATION TABLE

OVERBURDEN LOG 11155365-WI.GPJ GHD\_Corp 15/6/18