



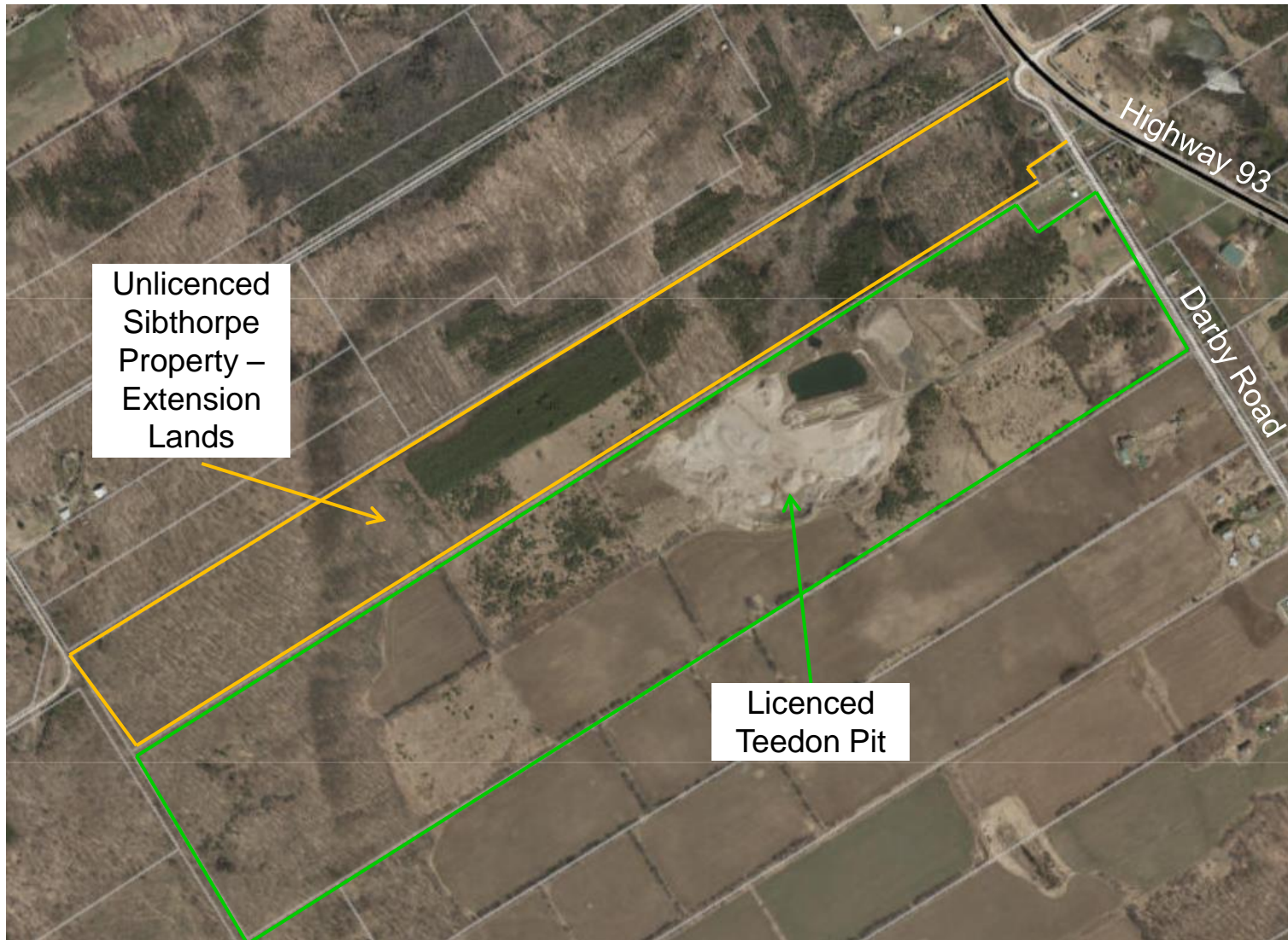
# Teedon Pit – CLC Meeting #3

June 19, 2018

# Agenda

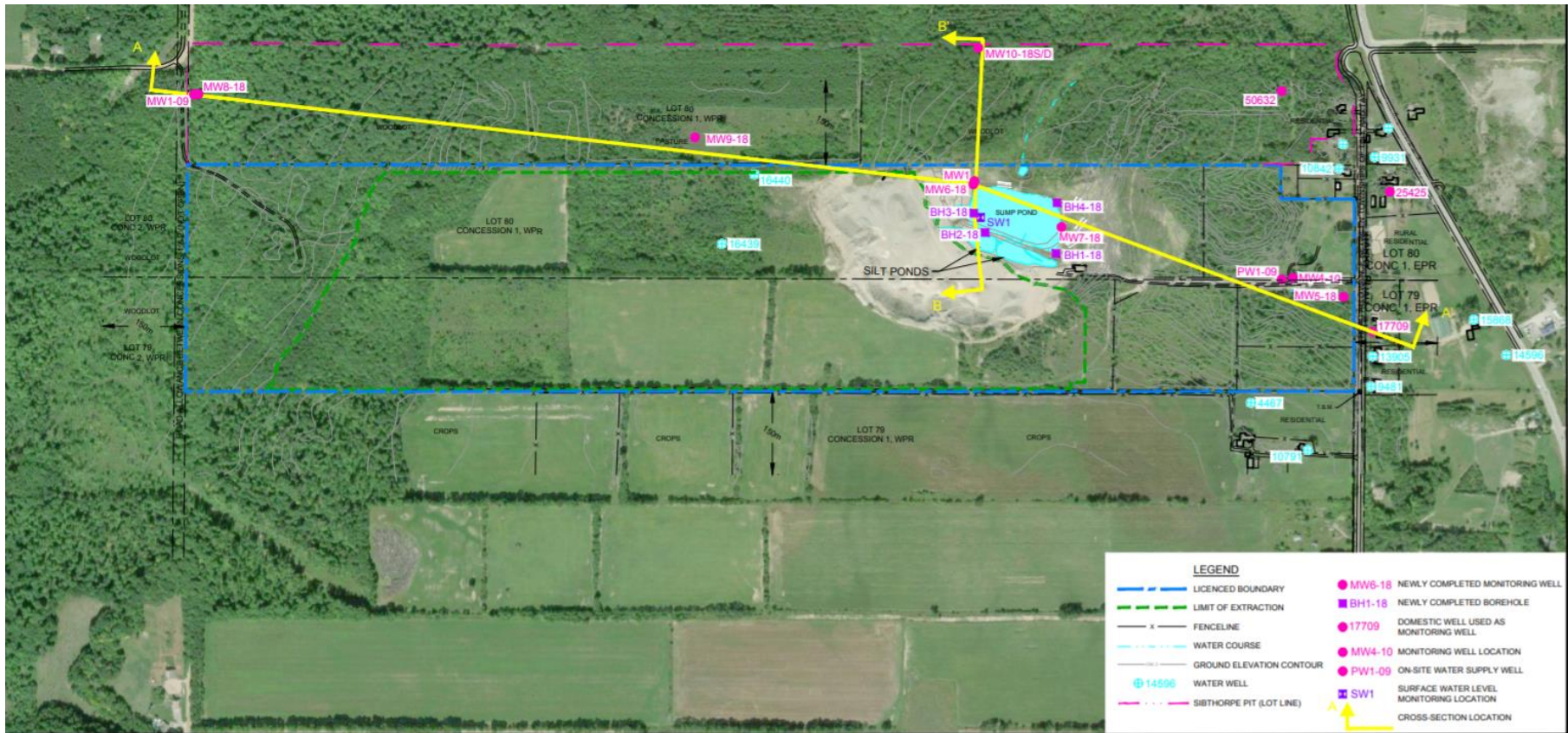
- Operations Update
- PTTW – Update on Well Inventory & PTTW
  - Cross Sections
- Traffic
- Review CLC Issues List
- Next Meeting –October 1 to 4

# Teedon Pit – Operations Update

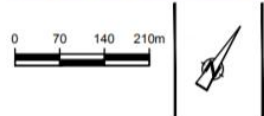




# Permit to Take Water Renewal



Source: Microsoft Product Screen shot Reprinted with permission from Microsoft Corporation, Aquisition Date 2018, Accessed April, 2018



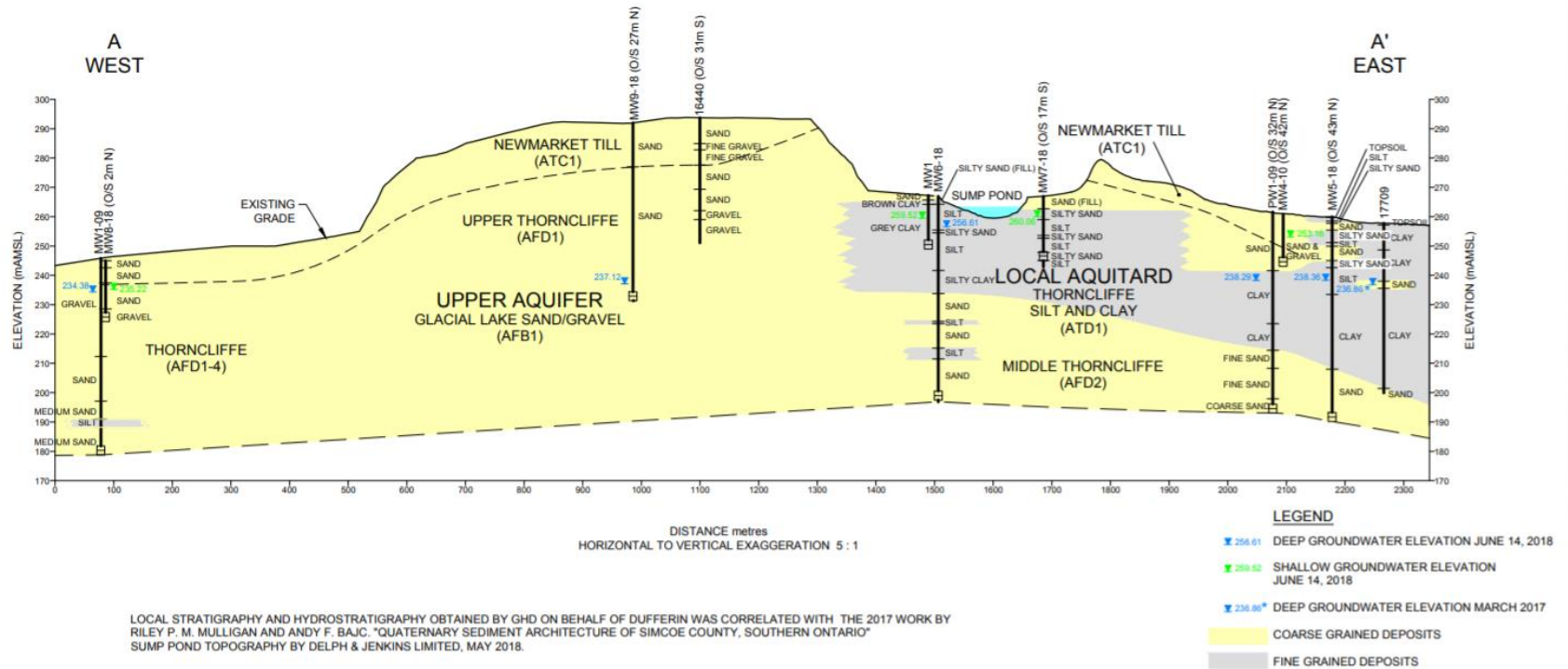
DUFFERIN, TEEDON PIT  
TOWNSHIP OF TINY, COUNTY OF SIMCOE, ONTARIO

HYDROGEOLOGIC CROSS-SECTION LOCATIONS

11155365-00  
Jun 18, 2018

FIGURE 1

# Permit to Take Water Renewal



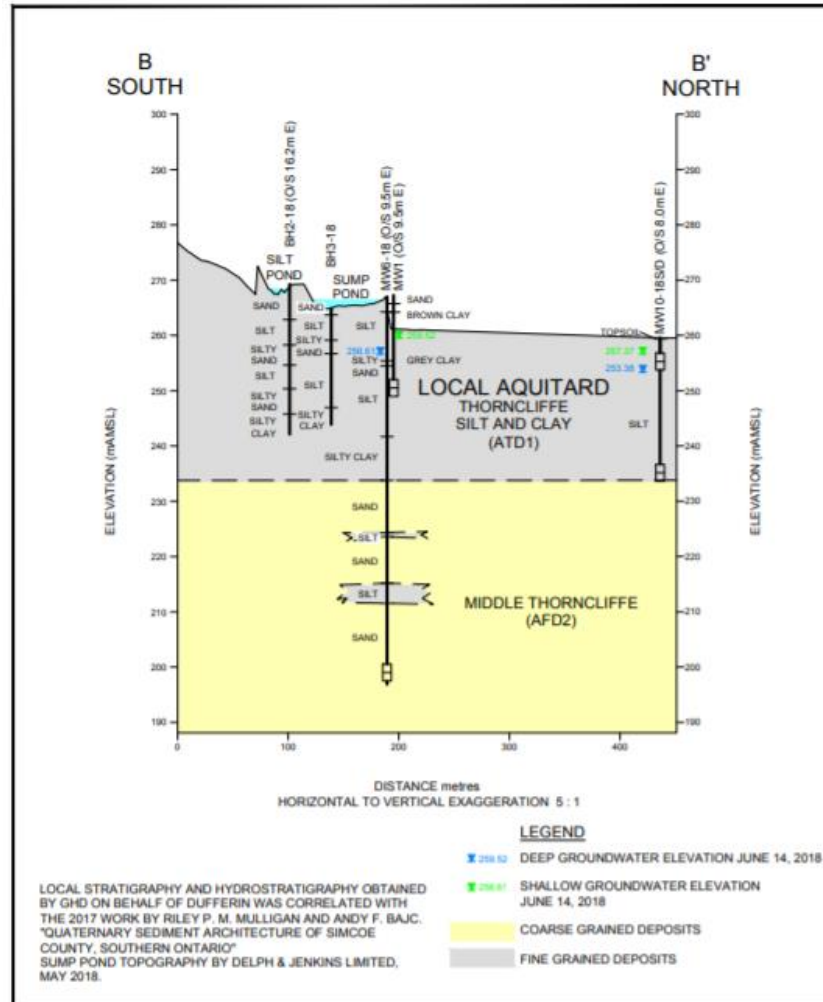
DUFFERIN TEEDON PIT  
TOWNSHIP OF TINY, COUNTY OF SIMCOE, ONTARIO

SITE HYDROGEOLOGIC CROSS-SECTION A-A'

11155365-00  
Jun 18, 2018

FIGURE 2

# Permit to Take Water Renewal



DUFFERIN TEEDON PIT  
TOWNSHIP OF TINY, COUNTY OF SIMCOE, ONTARIO

11155365-00  
Jun 18, 2018

SITE HYDROGEOLOGIC CROSS-SECTION B-B'

FIGURE 3

# Traffic

- Dufferin Aggregates ships product 2 ways
  - DFA delivers – 25-50%
  - Customer pick up – 50-75%
- DFA Utilizes approximately 80 different vendors across footprint
- DFA Teedon uses approximately 5-10 vendors for delivery and pickup
- Strategy is to partner with local trucking companies:
  - All vendors must meet our safety requirements
  - All vendors must receive annual orientation
  - All vendors are expected to communicate safety messages to all drivers
  - All infractions are logged and investigated
  - First time offenders are warned
  - Repeating offenders are progressively disciplined up to and including suspension of DFA delivery services
  - Vendors that have more than 3 infractions in a 30 day period are required to provide an action plan to improve

# Incident Summary

Type	Description	Action Taken
Speed	Trucks driving too fast on Darby Road	<ul style="list-style-type: none"> <li>• Investigated</li> <li>• Driver Communication</li> <li>• Monitored</li> <li>• Letter</li> <li>• Email</li> </ul>
Two way traffic	Narrowness of pit entrance and S-bend is resulting in temporary blocking of road	<ul style="list-style-type: none"> <li>• Investigated</li> <li>• Enforcement</li> </ul>
Darby Road Truck Route	Trucks entering Darby road from the south entrance	<ul style="list-style-type: none"> <li>• Signage</li> <li>• Letter</li> <li>• Email</li> <li>• Driver Communication</li> </ul>
Early Arrival	Trucks arriving on Darby road before 7am	<ul style="list-style-type: none"> <li>• Investigate</li> <li>• Communicate to Haulers and Customers</li> <li>• Signage (New)</li> </ul>



## Speed Monitoring

Speed data was collected on Darby road on 3 separate dates between the front entrance of DFA Teedon Pit to the top of the hill.

Vehicle Type	# of Vehicles speeds recorded	Average Speed	# of Vehicles over the speed limit
Gravel Haulage Trucks	50	35 km/hr	2
Cars	17	55 km/hr	11
Other	4	52 km/hr	3

# Teedon Pit – Potential Traffic Improvements





# Dufferin Aggregates

---

A division of CRH Canada Group Inc.