

A photograph of a stone wall in a wooded area, with a green banner overlaid containing text. The wall is made of large, stacked stones and is partially covered by trees and foliage. The banner is a solid green color with white text.

Acton Quarry *After-use*

Where we are.
Where we want to be.
Together.

March 2011

Overview - Past, Present and Future

Land Use



Where we are. Where we want to be.



- History of Quarry Activity
- JART Process
- Dufferin's Commitment to Community

Where we will be in ± 6 years.



Approved final land form

Where we will be in ± 6 years.



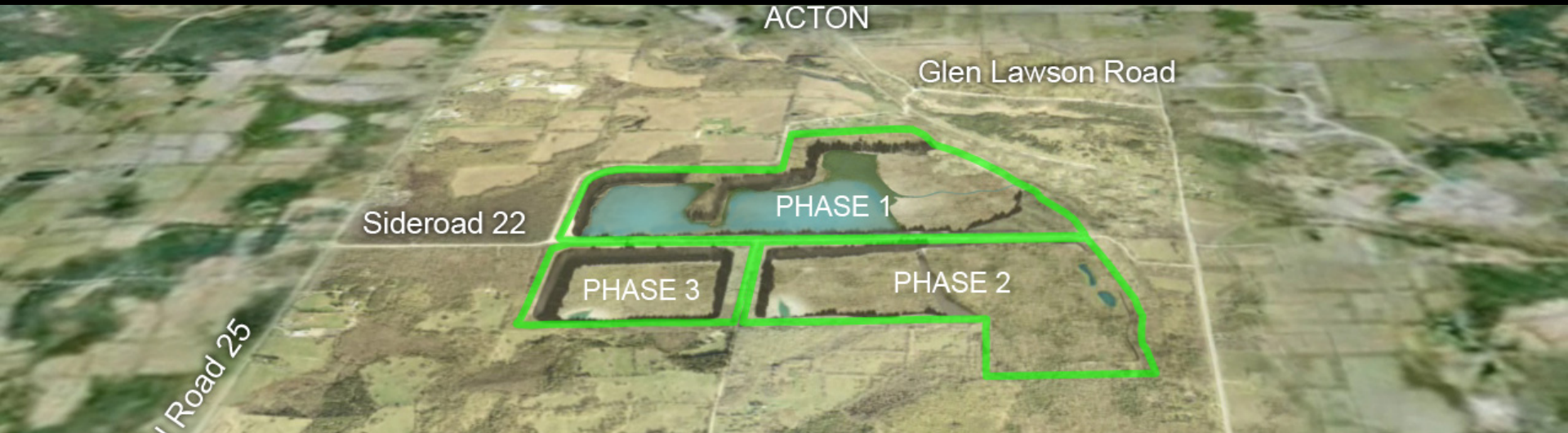
Phase I Passive
Outflow to Black
Creek

Approved final land form

Where we will be in ± 6 years.



Doing our part to enhance the approved plan.



- Phase 1 now includes a lake, island, a large wetland, a watercourse that provides passive discharge to Black Creek, and forested side slopes with areas of exposed cliff faces
- Phase 2 East now includes hummocky topography providing upland and wetland conditions, and landscape connections that will also expand the forested Escarpment corridor

Future of the Existing Quarry



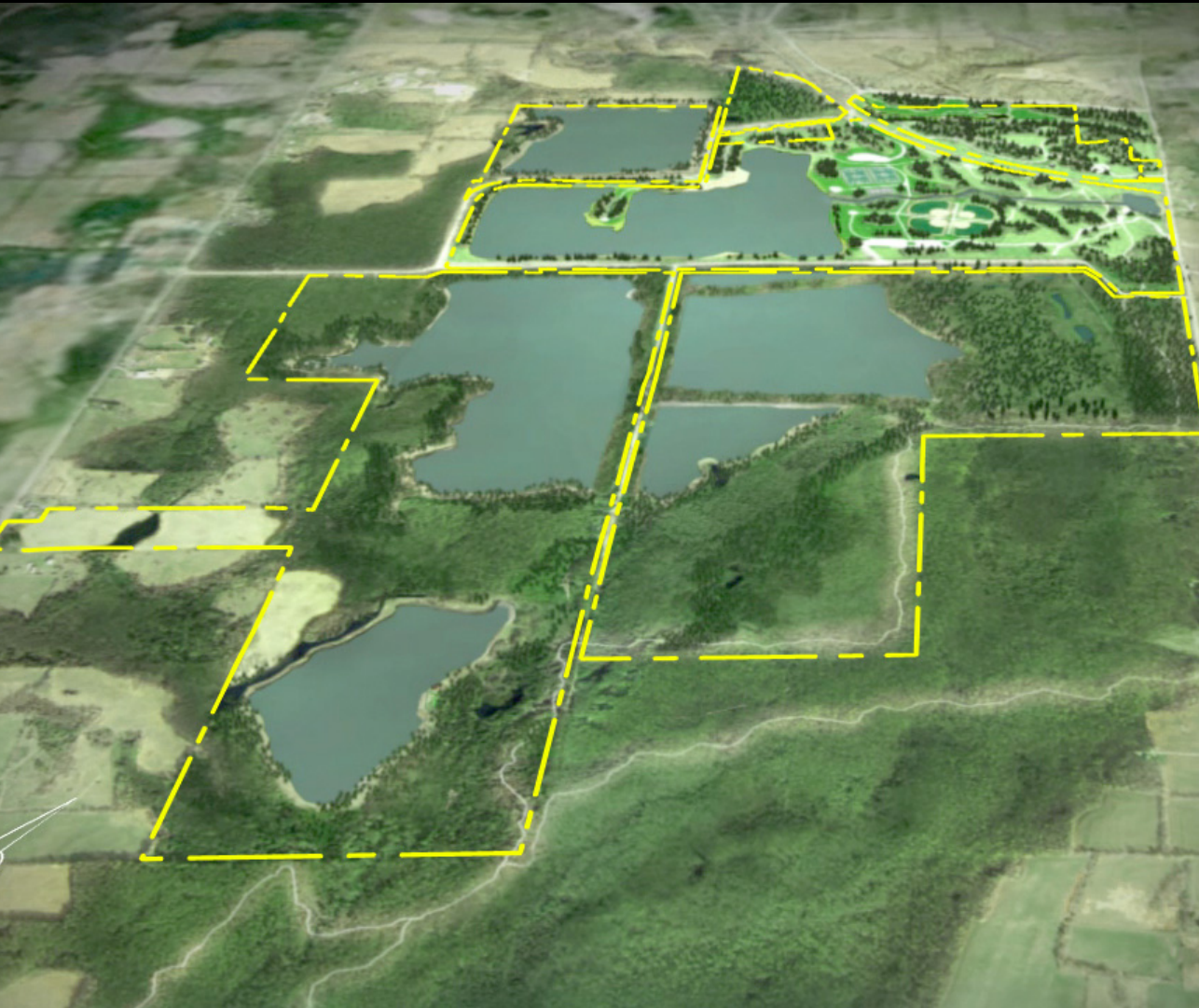
- Rehabilitated site available as early as 2020
- Town has option for ownership
- Development of the site will require additional approvals and funding
- Opportunities for environmental conservation and recreation
- Long-term pumping required to keep landform dry
- Water benefits not realized without changes

Where do we go from here?



- Extension
Rehabilitation
Vision
- Continued
extraction:
Business Case
for various
opportunities

The Extension Rehabilitation Vision



Objectives:

- Environmental protection and conservation
- Natural corridor linkages
- Public ownership and education
- Opportunities for water management

Benefits to the Community

Land Use



Rehabilitation takes less time than you think...



Beginning in the early 1990's

Dufferin Milton Quarry Rehabilitation Example

Rehabilitation takes less time than you think...



Finishing up in 2002

Dufferin Milton Quarry Rehabilitation Example

Rehabilitation takes less time than you think...



2007

Dufferin Milton Quarry Rehabilitation Example

Acton's vision could be realized in a similar timeframe



Opportunities:

- Glen Lawson Lands
- Acton North Lands
- Acton South Lands

Let's put the Vision into action in Acton



- Timelines
- Ownership/Partnership decisions
- Landform input
- Agreements/Securities

in time...

**OPA and ZBLA decisions
on the extension**

Where we want to be. *Together.*

