



Strength. Performance. Passion.

Paris Pit CAP

March 18, 2014

Agenda

Welcome

Minutes from Last Meeting

Dufferin Paris Pit - General Update

Site Timeline

Health & Safety - Silica

General Discussion & Questions

Next Meeting Date and Potential Topics

Update: Paris Pit PTTW & ECA (isw) Applications

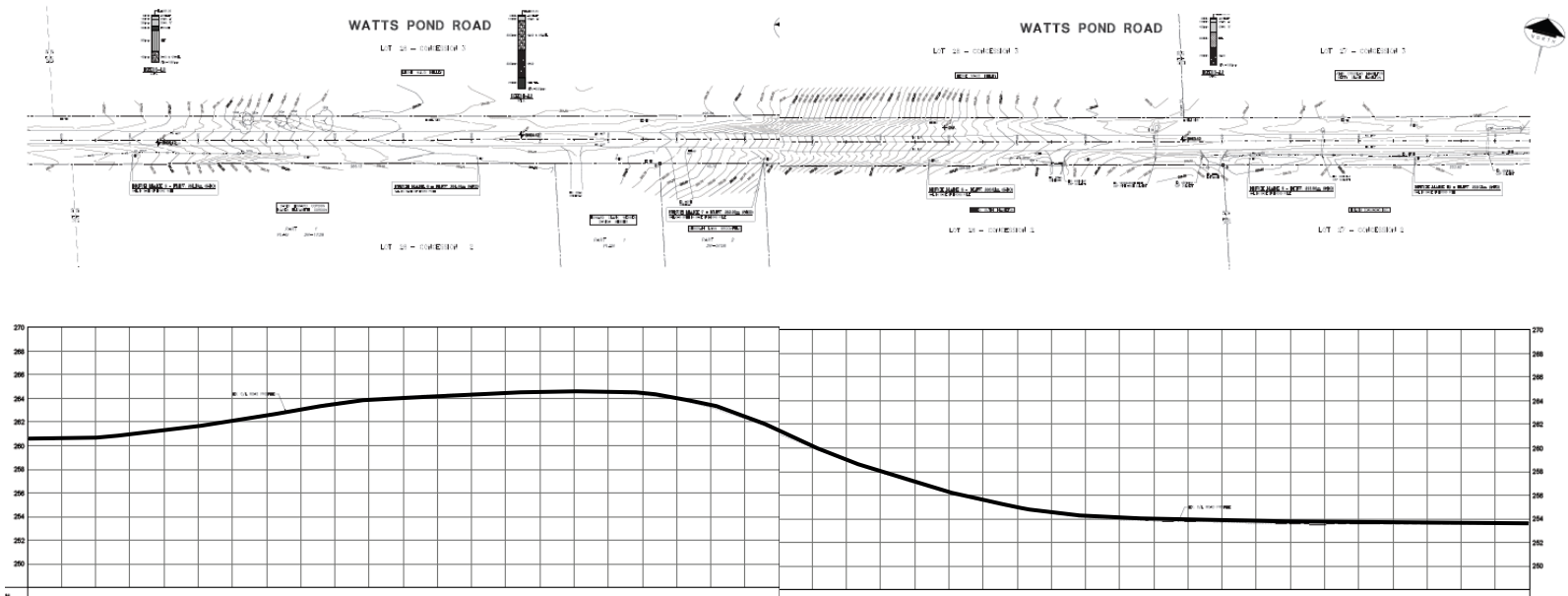
- MOE is processing the PTTW and ECA applications. MOE asked Dufferin Aggregates to conduct the well inventory and they had some technical questions for Conestoga Rovers and Associates (CRA).
- All of the site neighbour visits have been completed for the well inventory, however the report has not been finalized. When the report is finalized it will be posted on the Paris Pit website.
 - ▶ A future CAP can be dedicated to a CRA review of the report.
- MOE has indicated they will review the additional information we are providing.
- Once reviewed, the MOE will hold a technical agency meeting and make a decision on the applications.

Update: Well Inventory

- The well inventory was carried out at the properties surrounding the Paris Pit.
- The inventory was done on a much larger area than required by MOE.
- One landowner declined to participate.

Update – Paris Pit Watts Pond Road Design

- J.H. Cohoon Engineering is working on the road profile design.



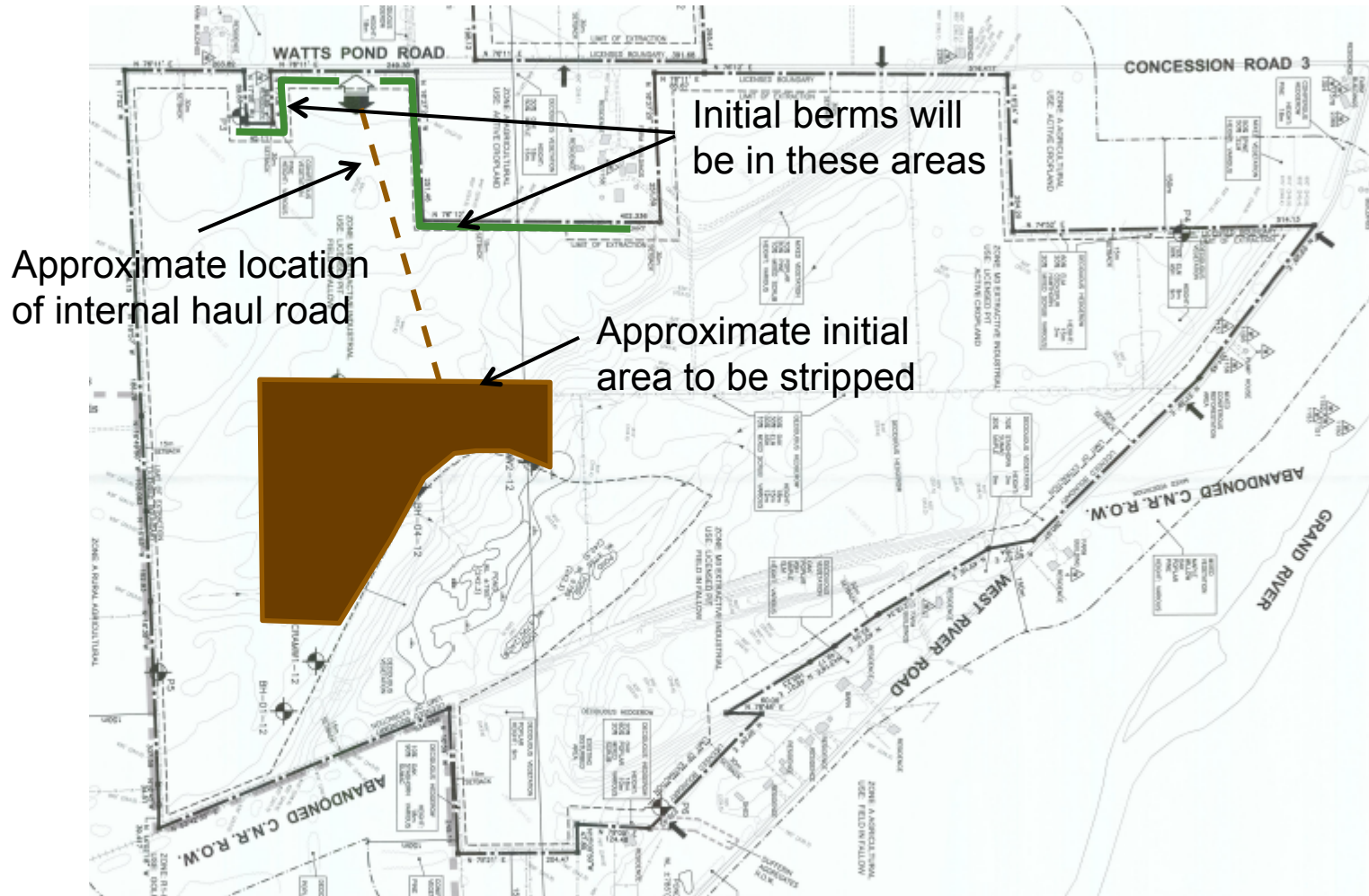
Paris Pit Timeline: 2014

2014

- June – September
 - ▶ Install fencing
 - ▶ Construct Paris Pit entrance (gravel)
 - ▶ Strip topsoil and overburden the internal haul road and the area to be extracted
 - ▶ The material that is stripped will be placed in berms around the perimeter of the site
- September – December
 - ▶ Potentially process material using portable equipment

Note: Timing may vary

Paris Pit Timeline



Paris Pit Timeline: 2015

2015

- January – March
 - ▶ Prepare to open site
- April – June
 - ▶ Complete reconstruction of Watts Pond Road
 - ▶ Install scale & scale house/offices
 - ▶ Processing material using portable equipment
 - ▶ Commence shipping when Watts Pond Road complete
- September – December
 - ▶ Shipping continues
 - ▶ Tree removal and stripping (if required)
 - ▶ Processing of material using portable equipment

Note: Timing may vary

Recent Awards Received by Dufferin

National Stone Sand & Gravel Association

- Environmental Award – Milton Quarry (Silver)
- Community Relations Award – Acton Quarry (Silver), Ogden Point Quarry (Bronze)

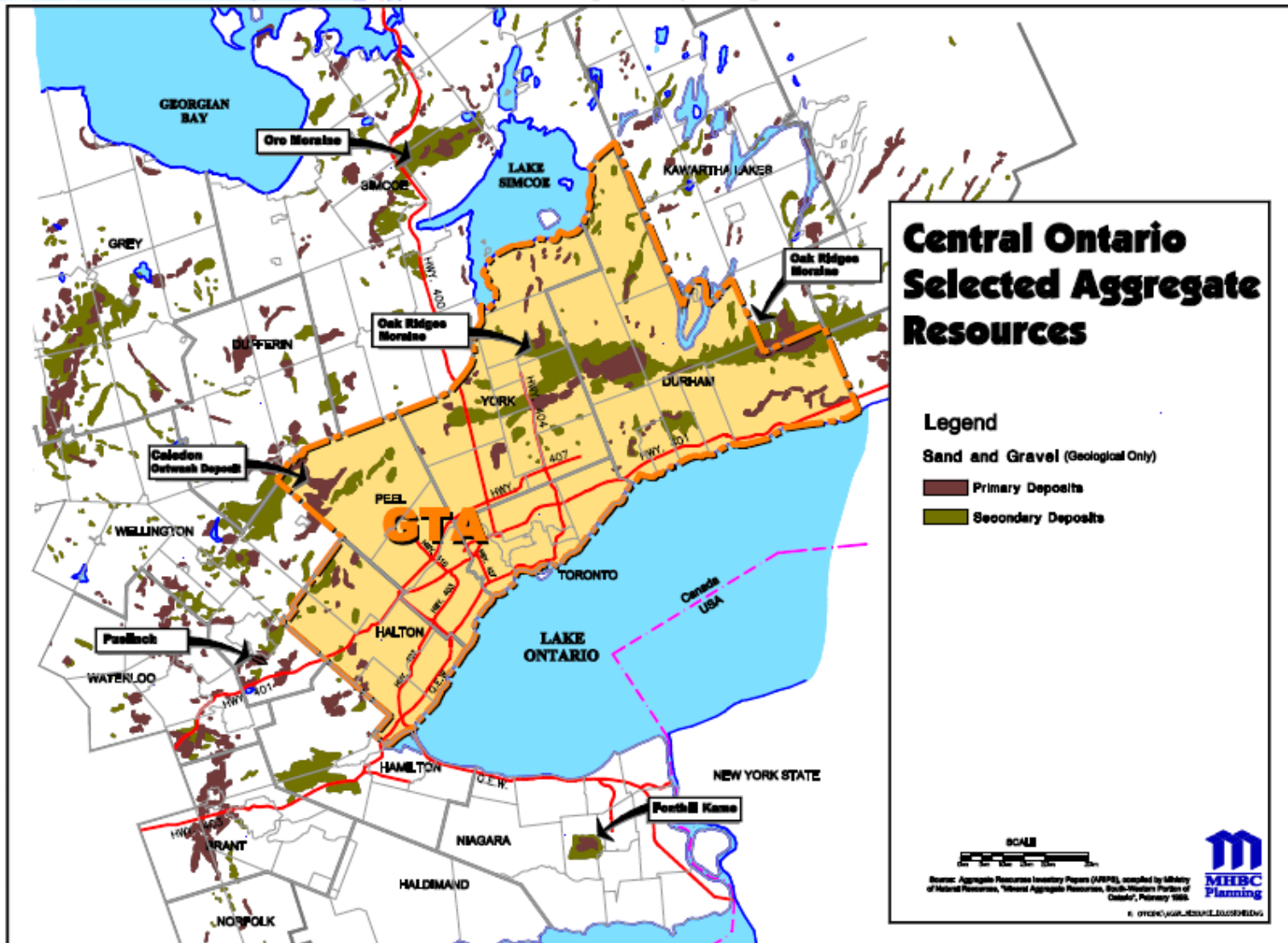
Ontario Stone Sand & Gravel Association

- Community Relations – Acton Quarry, Cayuga Quarry, Flamboro Quarry, Milton Quarry, Mosport Pit, Ogden Point Quarry
- Progressive Rehabilitation – Brown Pit, Mosport Pit
- Environmental Achievement – Acton Quarry
- Individual Safety Awards received by Rick Baynton, Millcreek Pit and Mike Nelson, DFA Milton Quarry.

Aggregate Facts – Dufferin Aggregates Brown Pit OSSGA Progressive Rehabilitation Award 2013



Aggregate Facts – Sand & Gravel



Aggregate Facts – Ontario Production

- How many tonnes of aggregate are produced annually in Ontario?
 - ❑ 75 million tonnes
 - ❑ 100 million tonnes
 - ❑ 150 million tonnes
 - ❑ 200 million tonnes

Aggregate Facts – Ontario Production

- How many tonnes of aggregate are produced annually in Ontario?

Year	Ontario Tonnes in Millions	County of Brant Production Tonnes in Millions
2003	165	2.1
2004	173	2.0
2005	174	1.8
2006	179	2.3
2007	173	2.3
2008	167	2.2
2009	153	1.4
2010	166	1.9
2011	159	1.7
2012	152	1.7

Aggregate Facts – Top 10 Aggregate Producing Municipalities

Municipality	Production (Tonnes in Millions)				
	2012	2011	2010	2009	2008
City of Ottawa	10.6	10.9	12.7	11.0	11.2
City of Kawartha Lakes	5.1	4.7	4.6	4.5	5.5
Municipality of Clarington	5.1	5.0	4.9	4.1	4.6
City of Hamilton	5.0	5.0	5.3	4.9	5.7
Township of North Dumfries	4.4	4.5	3.8	3.4	3.7
Town of Milton	4.4	4.9	3.7	3.7	4.5
Township of Zorra	4.1	3.6	3.3	2.8	3.6
Town of Caledon	3.9	3.6	3.9	3.6	3.8
Puslinch Township	3.8	3.1	3.6	3.4	3.9
Township of Uxbridge	3.6	3.9	3.4	3.0	3.7

Aggregate Facts – Places to Grow

- Places to Grow is the Provincial initiative to plan for growth in Ontario in a way that supports economic prosperity and achieves a high quality of life. Planning for growth:
 - ▶ Sustains a robust economy
 - ▶ Builds complete and strong communities that use land, resources and existing infrastructure efficiently, with amenities and community infrastructure to support a good quality of life
 - ▶ Promotes a healthy environment and a culture of conservation
- Current population in County of Brant is ±36,000.

Aggregate Facts – Places to Grow

- What is the forecasted population of Brant County, in 2031 and 2041 in the Provincial Places to Grow plan?
 - ❑ 39,000 and 49,000 people
 - ❑ 44,000 and 51,000 people
 - ❑ 49,000 and 57,000 people

Health & Safety and Silica

- Dufferin Aggregates overall goal on Occupational Health & Safety (OH&S) is “Zero Harm to People”.
- We conduct our business with respect for this core value.
- In southern Ontario silica is not an issue because almost none of the sand and gravel contains silica.
- The Ministry of Labour requires silica testing at sand and gravel pits every two years.
- Testing of employees is done at all Dufferin Aggregates sites by a third party.
 - ▶ **To date, there have been NO silica related health issues at any Dufferin Aggregates site.**

Earth Week Event

- In early May the third Earth Day event will be held at the Paris Pit site to plant native shrubs, trees and wild flowers in the Well Head Protection Area A.



Photo: Courtesy Paris Star May 3, 2013

Next Steps

- PTTW & ECA (isw) – MOE to make a decision on the applications
- Road design work will continue
- Entrance construction will begin in June/July of this year
- Next CAP meeting: June 2014
 - ▶ Topics could include:
 - CRA presentation on Well Inventory
 - Update on Paris Pit operations