



Strength. Performance. Passion.

Paris Pit CAP Meeting

May 19, 2015

Agenda

Welcome

Approval of Minutes from October 2014 CAP meeting

Update

PTTW & ECA (isw)

Watts Pond Road

2015 Site Activities

CSR

Sale of Holcim (Canada) Inc.

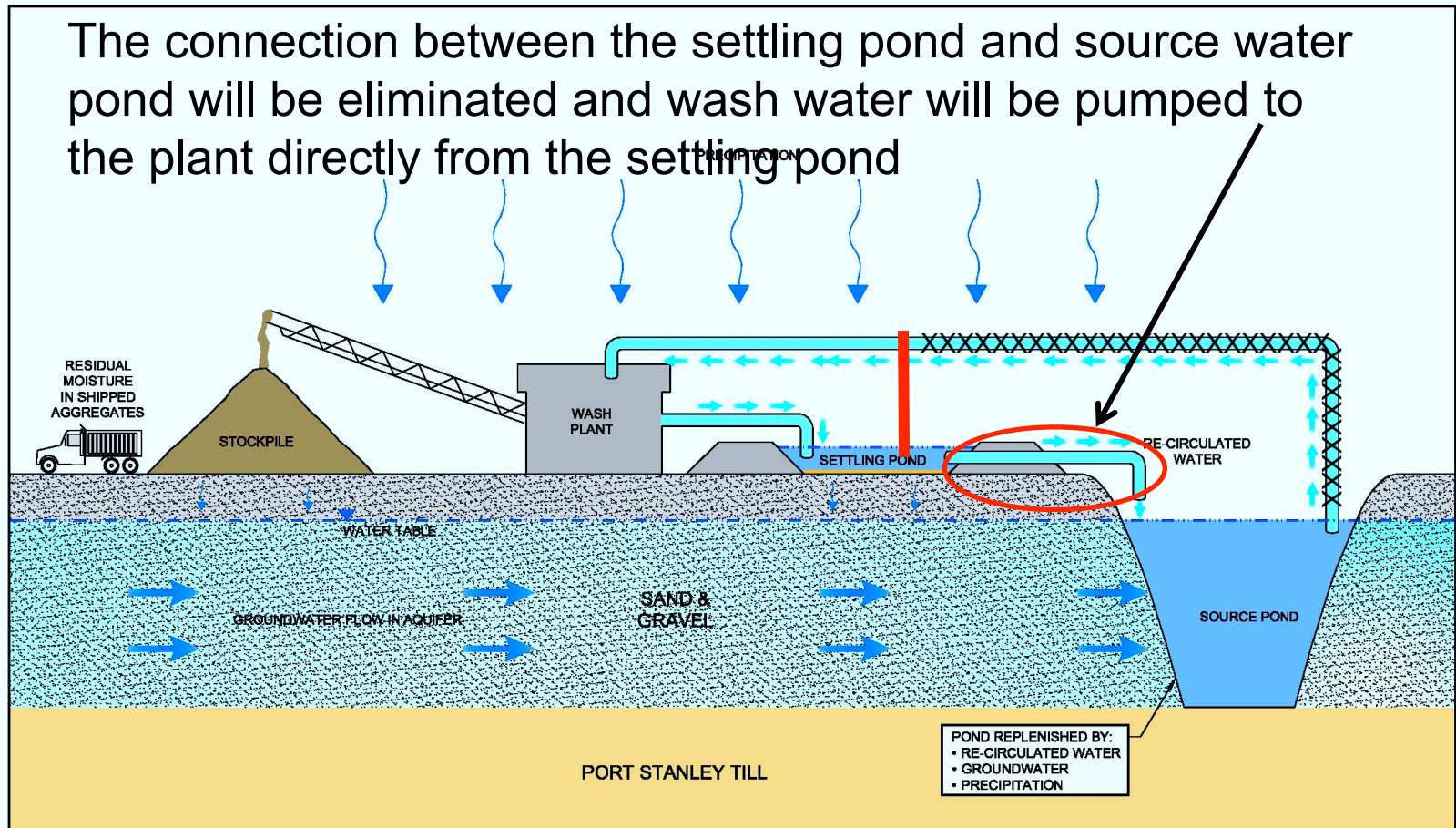
Next Steps

Update – PTTW & ECA (isw) Applications

- A technical agency meeting regarding the Paris water permit applications was hosted by MOECC February 5, 2015. Those in attendance included MOECC staff, County of Brant staff and a Councilor, Six Nations staff, Brant County Health Unit staff, CCOB and DFA.
- PTTW – we are waiting for MOECC to make a decision
- ECA (isw) – after discussions with MOECC, we have revised the application to have the wash water remain within the closed loop. That is to say, after the water is used to wash the aggregate, it will move to the settling pond and then be recycled back to the plant. The settling pond will not be connected to the source pond.

Update – PTTW & ECA (isw) Applications

The connection between the settling pond and source water pond will be eliminated and wash water will be pumped to the plant directly from the settling pond



POND REPLENISHED BY:
 • RE-CIRCULATED WATER
 • GROUNDWATER
 • PRECIPITATION

- Source Water Pond (Reservoir for washing Operations)
- Extraction to create source water pond will occur gradually (months)
 - Wash water is re-circulated to source water pond after passing through settling pond
 - Only water loss is through evaporation and residual moisture on material

figure 2.2
 CLOSED-LOOP AGGREGATE WASHING SYSTEM
 PTTW SUPPORTING HYDROLOGIC AND HYDROGEOLOGIC STUDY
 DUFFERIN PARIS PIT
 County of Brant, Ontario



78410-00(001)GN-WA027 MAR 7/2013



Update – PTTW & ECA (isw) Applications

- As a result of this revision, we have indicated the amount of water taking can be reduced to a maximum of 14,000 l/min.
- MOECC notified DFA that due to an internal process decision, they will be posting the ECA (isw) application on the EBR.

Update – Watts Pond Road Reconstruction

- Council has approved the road reconstruction work.
- The first step will be for Hydro One to relocate the poles and hydro line. We understand this may start in late May.
- Road work is expected to start in late June. The work will be done by Dufferin Construction.
 - ▶ Existing road surface will be recycled
 - ▶ Ditching established
 - ▶ Road base & pavement
- Notices will be provided to the property owners on Watts Pond Road prior to commencement of the road work. The road will be open during construction however from time to time there will be delays. The road reconstruction is anticipated to take approximately 2 months.

2015 Site Activities

- Site is preparing to commence shipping products to customers.
- Scales have been installed and scale house arriving shortly.
- Office trailers and hydro line have been installed

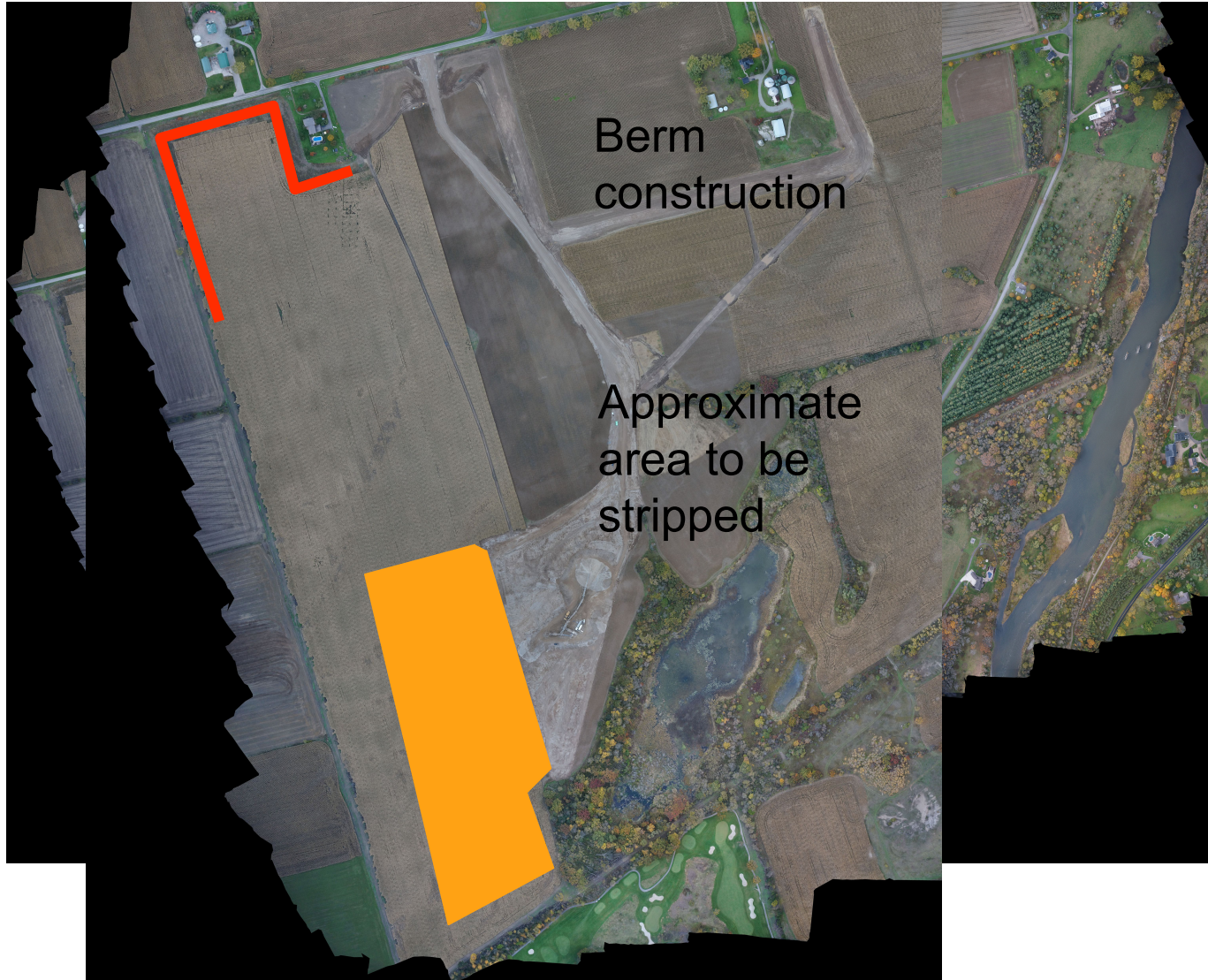


2015 Site Activities

- Tree nursery has been planted.



2015 Site Activities



2015 Site Activities

- Fine grade berms and seed
- Commence shipping of products
- Processing as required
- When the PTTW is issued, excavation of the source water pond will commence



Dufferin Aggregates in the Community

- April 29th the site held the 4th annual Paris Pit Earth Day event. Approximately 400 trees were planted by the Paris FC girls U12 soccer team. The trees will provide habitat enhancement and a future tree screen.



Dufferin Aggregates in the Community

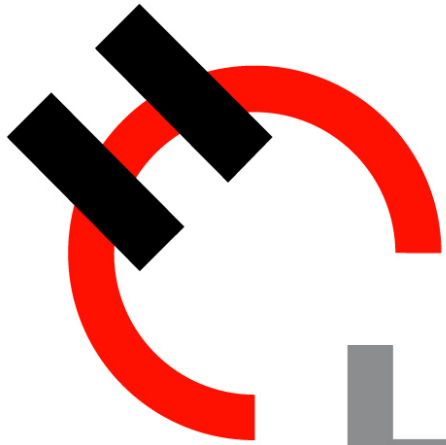


Sale of Holcim (Canada) Inc.

- The shareholders for Holcim and Lafarge have agreed on completing the merger of the two companies globally.
- As a condition of the merger, Holcim (Canada) Inc. will be sold, along with several other Holcim and Lafarge assets to maintain a competitive market place
- CRH has reached an agreement with Holcim to acquire Holcim (Canada) Inc. as well as other locations around the globe.
- CRH Facts
 - ▶ Formed in 1970 and based in Ireland
 - ▶ Operations in 35 countries
 - ▶ 76,000 employees

Next Steps

- Next CAP meeting: September 2015
 - ▶ Topics could include: site tour



Holcim