



Strength. Performance. Passion.

Paris Pit CAP Meeting

October 28, 2014

Agenda

Welcome

Approval of Minutes from June CAP meeting

Update

PTTW

Watts Pond Road

Site Preparation Activities

Requested time - Elizabeth Norris on Behalf of CCOB

CSR

Next Steps

Update

- PTTW & ECA (isw) applications
 - ▶ No Change since June CAP meeting:
 - All MOE questions have been addressed
 - Waiting for MOE to schedule technical agency meeting
- County of Brant's consultant (Stantec) has reviewed the PTTW application and the following statements are in their report:

"No impacts are anticipated at the Gilbert Well Field and the Well Head Protection Area for the well field"

"No impacts are anticipated at the Telfer Well Field and the Well Head Protection Area for the well field"

Update

- Watts Pond Road Reconstruction
 - ▶ Construction drawings are completed in draft
 - ▶ Details on potential pole relocations are being discussed with Bell and Hydro One
 - ▶ Reconstruction of Watts Pond Road from the pit entrance to Hwy 24A/Pinehurst Road is anticipated to commence \pm April 1, 2015
 - ▶ Pit entrance has been established



Site Preparation

- Fencing
 - ▶ A local Ontario Land Surveyor laid out the property boundary
 - ▶ Fencing contractor installed the fence and the gates



Site Preparation

- Fencing
 - ▶ Along the western boundary at a few locations, it was necessary to remove some trees. In other locations, as provided by the site plans, the fence was offset to preserve the trees.
 - ▶ The perimeter of Paris Pit south of Watts Pond Road has been fenced and marked with “No Trespassing” signs



Site Preparation

- Fencing



Update

- Stripping
 - ▶ Prior to commencing stripping, the limit of extraction in the area to be stripped was also laid out by a surveyor



Site Preparation

- Stripping
 - ▶ The stripping carried out in September & October was to establish the internal haul road and prepare the first area to be extracted.
 - ▶ The topsoil and subsoil has removed separately and has been stored in perimeter berms near the pit entrance



— Topsoil
— Subsoil
— Sand & gravel

Site Preparation

- Stripping
 - ▶ During the initial start up/opening of the pit, there are no areas that are depleted and ready for progressive rehabilitation. Consequently topsoil and overburden are stored in perimeter berms for future use.



Site Preparation

- Stripping
 - ▶ Equipment being loaded to haul stripped material to perimeter berms



Site Preparation

- Stripping
 - ▶ View of stripped area where extraction will commence.



Extraction

- The pit face has a good blend of sand and stone



Extraction & Processing

- Processing



Stockpiling

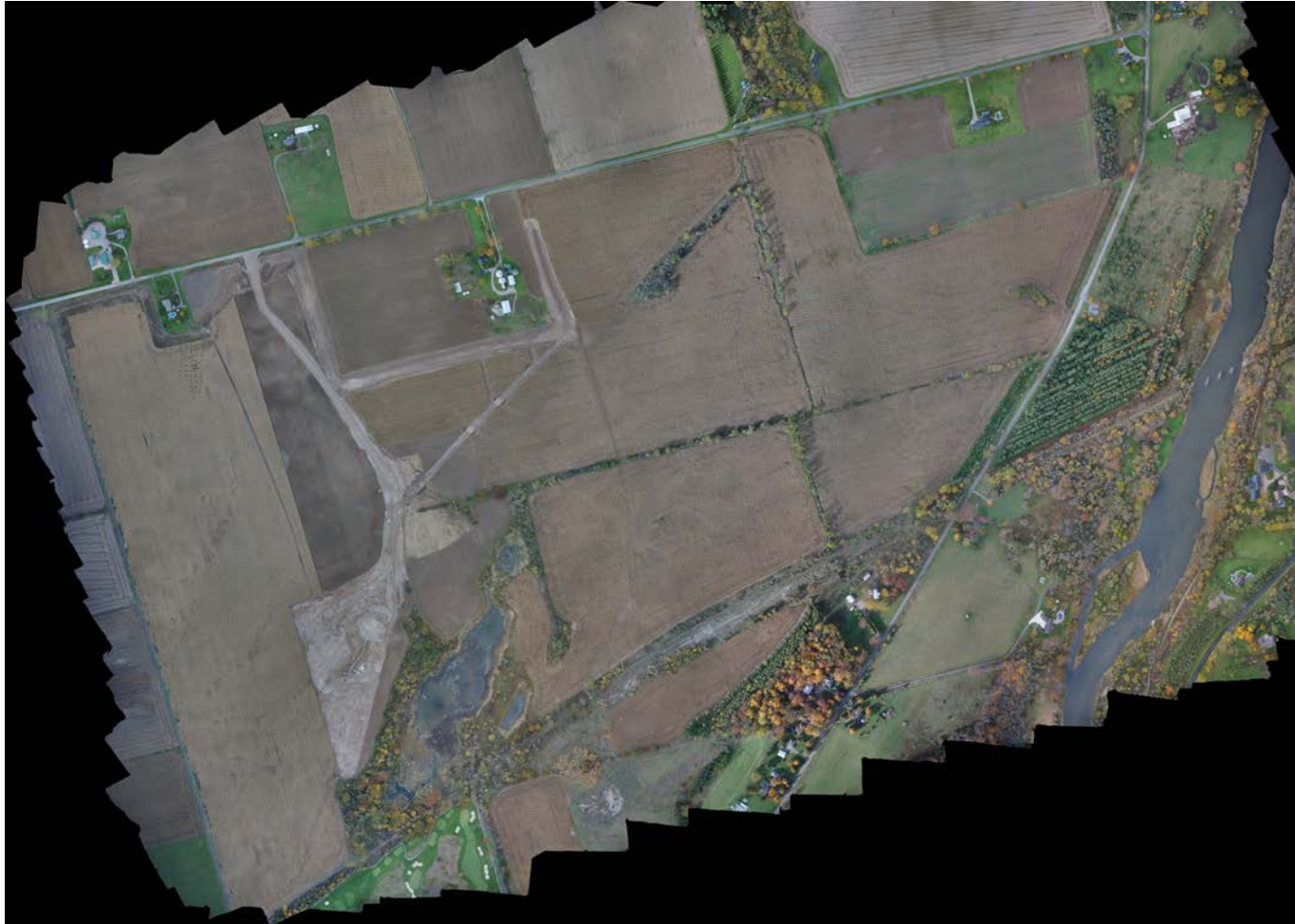
- The portable processing plant is producing granular A which will be used for internal haul roads and Watts Pond Road



Processing



October 2014 Aerial View



Request from Elizabeth Norris

- Time allocated to allow Elizabeth to present on behalf of CCOB

Dufferin Aggregates in the Community

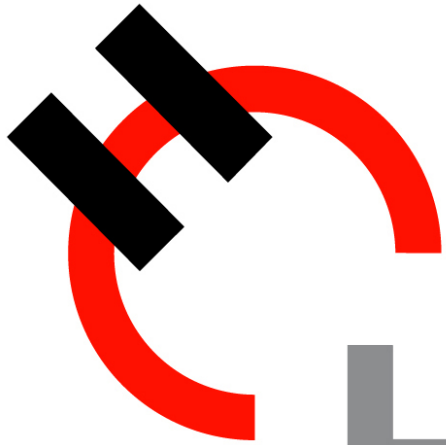
- September 19 approximately 25 Dufferin Aggregates employees from the Mill Creek, Butler, Flamboro and Cayuga sites worked at Camp Teka (Girl Guides of Canada)



Photo Source Brantford Expositor

Next Steps

- 2014
 - ▶ Complete processing of road base products
 - ▶ Wait to hear from MOE on PTTW & ECA(isw) applications
- 2015
 - ▶ Reconstruct Watts Pond Road from pit entrance to Hwy 24A
 - ▶ Fine grade berms and seed
 - ▶ Install scale
 - ▶ Commence shipping of products
 - ▶ Processing as required
- Next CAP meeting: April/May 2015
 - ▶ Topics could include: 2015 operational plans



Holcim