



# Paris Pit CAP Meeting

April 19, 2021



# Agenda

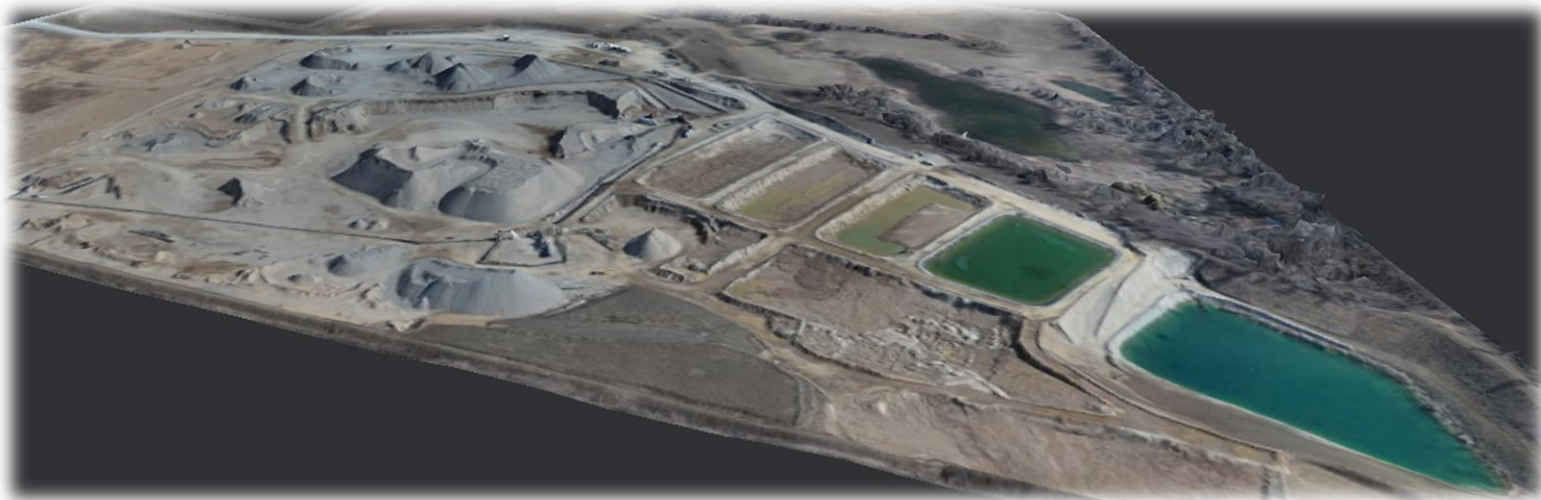
- Welcome & Introductions
- Review & Approval of Minutes from November 26, 2019 Meeting
- 2020 Operations Update
- 2019 & 2020 Water and Sediment Monitoring
- Permit to Take Water Update
- Membership Update
- Next Meeting

# Operations Update

# Paris Pit Operations

## 2020 Year in Review

- Started the season with the recirculation pond lined with HDPE.
- Processing began April 12. Processing plant was shut down Nov 5.
- 12 Employees – Hired three employees in 2020
- Processing/site preparation/progressive rehabilitation
- Topsoil importation from Paris Grand Development



# Paris Pit Operations

## 2021 Planned Operations

- Started dry crushing on March 15 and washing operations on April 12
- 12 Employees and currently hiring.
- Processing/site preparation/progressive rehabilitation

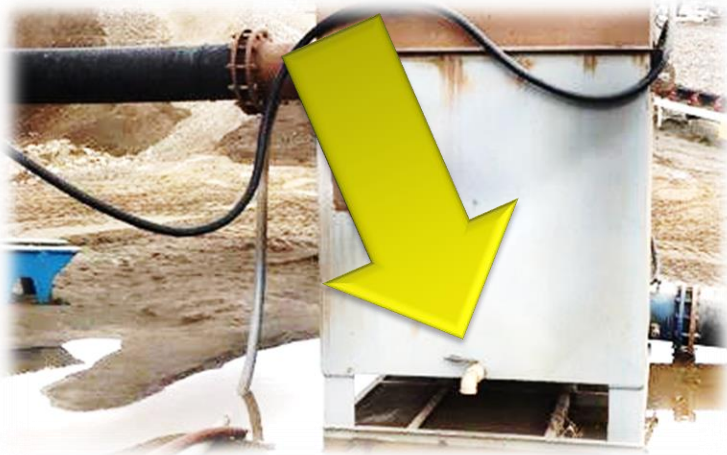


Shipping Yard & Processing Plant

# Paris Pit



# Paris Pit Operations



Sediment Sampling Area



Crushing Plant



988 Feeding Primary Bin

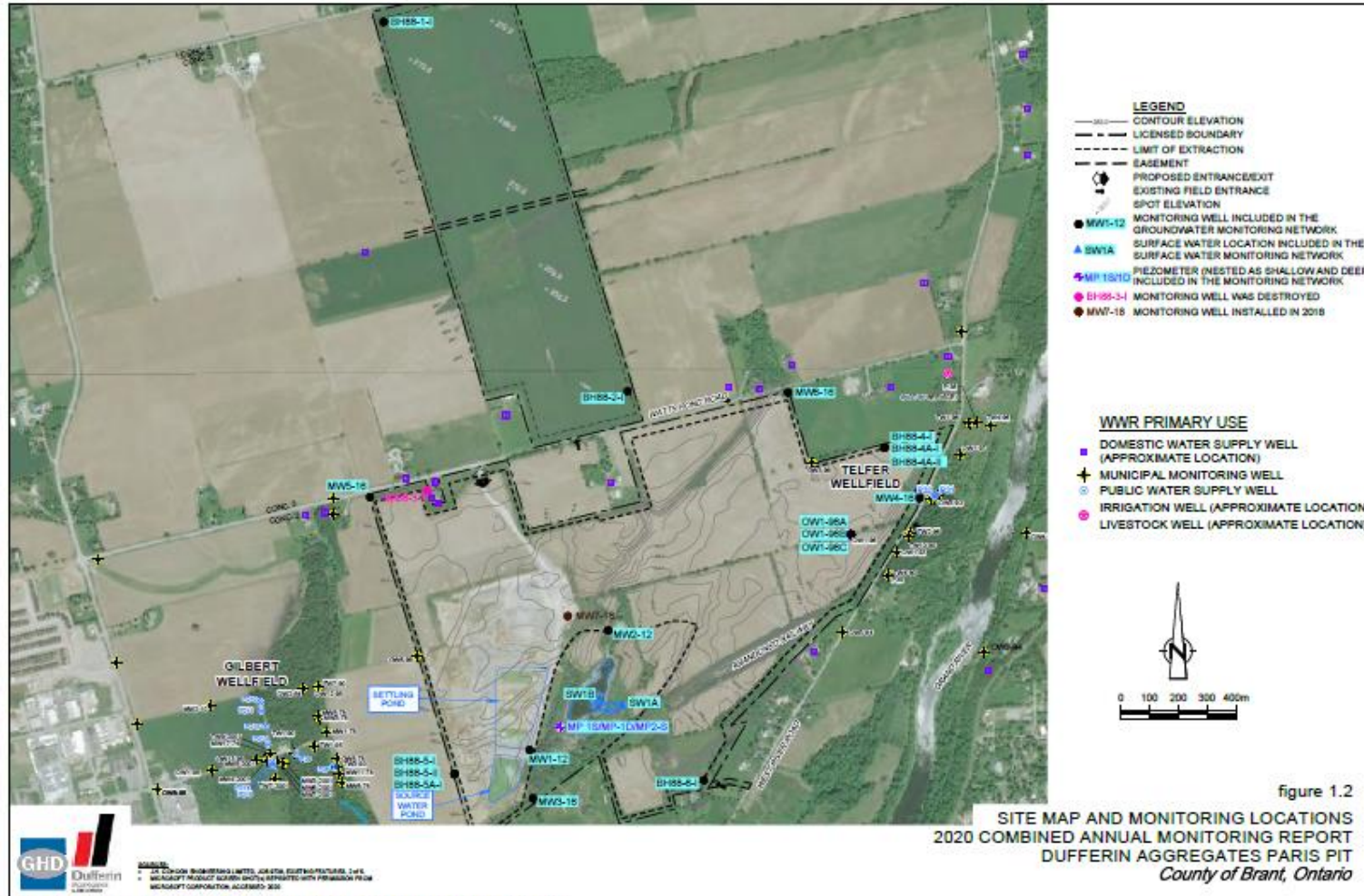
# Paris Pit Operations

- Conservation efforts
  - 2020 planted eastern white cedar and milkweed plants on rehabilitated slopes and in the well head protection area by the Telfer Well.
  - 2020 planted water plants in source pond.
  - 2021 planned planting – 2700 trees on south rehabbed slope.
- Dufferin was featured in TVO show called Striking Balance that was broadcast in November 2020. Can be seen on YouTube (Striking Balance, season 2, episode 3).





# Annual Water Monitoring at 18 Wells (3 in bedrock, 12 in overburden), 2 Piezometers, 2 Surface Water Locations

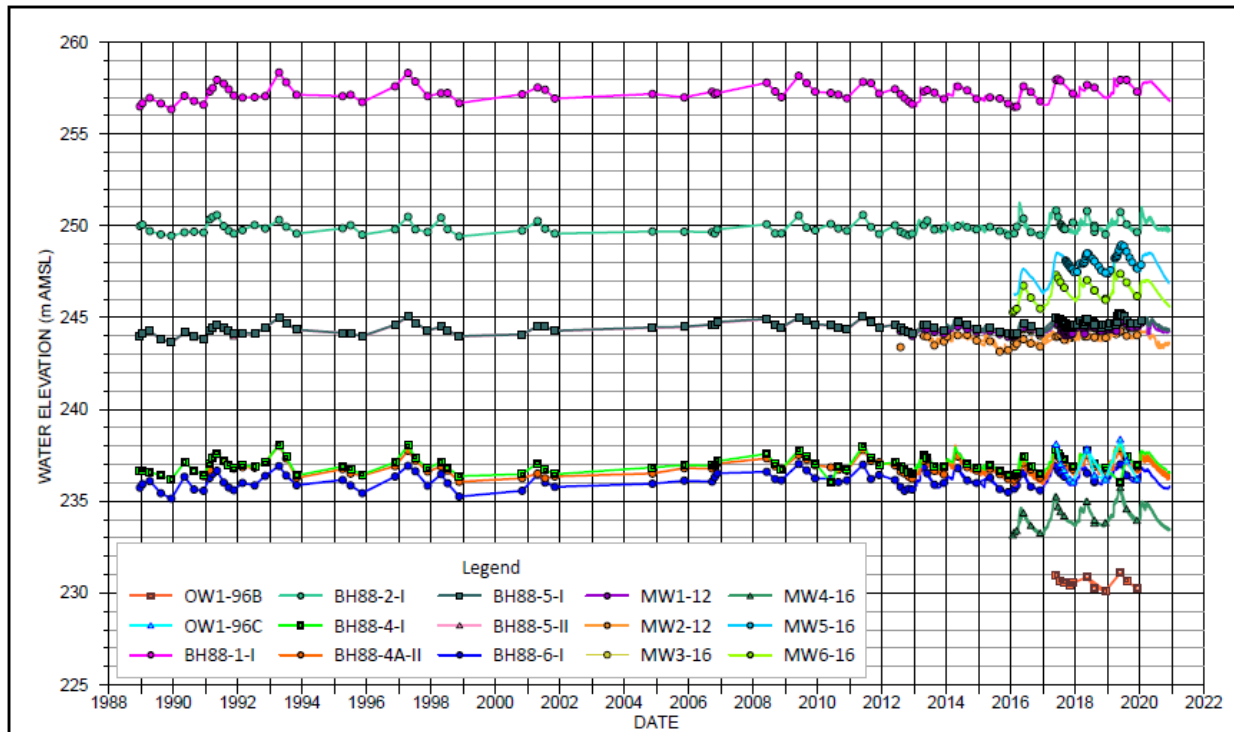


© 2020 DUFFERIN AGGREGATES LIMITED. ALL RIGHTS RESERVED. THIS DOCUMENT IS UNCLASSIFIED AND NOT CONTROLLED. IT IS THE PROPERTY OF DUFFERIN AGGREGATES LIMITED AND IS LOANED TO YOU BY PERMISSION FROM DUFFERIN AGGREGATES LIMITED. IT IS NOT TO BE REPRODUCED OR TRANSMITTED IN ANY FORM OR BY ANY MEANS, ELECTRONIC OR MECHANICAL, INCLUDING PHOTOCOPYING, RECORDING, OR BY ANY INFORMATION STORAGE AND RETRIEVAL SYSTEM. WITHOUT PERMISSION IN WRITING FROM DUFFERIN AGGREGATES LIMITED. GHD 000 000 0000



# 2019 & 2020 Water Monitoring Programs

- Water levels are recorded with dataloggers and checked manually when the dataloggers are downloaded.



DUFFERIN AGGREGATES PARIS PIT  
COUNTY OF BRANT, ONTARIO

078410  
Mar 08, 2021

GROUNDWATER HYDROGRAPH - OVERBURDEN

FIGURE 4.1b

WAT file: \\ghdnet\ghd\CA\Waterloo\HEG\HEG\78410\GRAPHER\AMR\2020\Figure 4.1b - Groundwater Hydrograph - Overburden.grf



# 2019 & 2020 Water Monitoring Programs

## Monitoring Wells (groundwater)

- 2020 water quality samples were taken May 20/21, August 10-13 and December 1/2. Testing for general chemistry and dissolved metals was carried out at 15 wells and 7 wells also were tested for pesticides.
- Similar to historical sampling, some minor elevated levels of aluminium, iron & manganese.
- No pesticides, atrazine or metabolites detected in 2019 or 2020.

## Surface Water

- 2020 samples were obtained from the source pond and SW1B in May, August and December.
- No pesticides, atrazine or metabolites detected in 2019 or 2020. Similar to other years, some minor elevated levels of aluminium, iron and phosphorus.

# 2019 & 2020 Water Monitoring Programs

## Wash Water

- Samples were obtained from the recirculation pond and SW1B in March, July and October and tested for general chemistry, metals and pesticides.
- No pesticides, atrazine or metabolites detected in 2019 or 2020.

## Sediment Sampling

- Composite sediment samples were obtained over the five month period of April to August.
- No parameters were detected above the established reporting limits in 2019 or 2020.
- It was concluded the wash pond sediment is suitable for use in site rehabilitation of depleted areas.



## 2019 & 2020 Water Monitoring Programs

- No water related complaints received in 2019 or 2020.
- Sampling carried out to evaluate potential impacts from the spill caused by supply company indicate no impacts.
- Summary:
  - Water taking and aggregate washing have not caused any water quantity interference issues;
  - No detrimental effects to surface or groundwater quality from aggregate washing;
  - No pesticides, atrazine or metabolites detected.

# Application to Amend Permit to Take Water (PTTW)

- Current PTTW approved April 2017:
  - 14,000 L/min, 12 hours per day, a total of 10,080,000 L/day for 180 days;
  - After three months, reduce taking to 1,400 L/min;
  - May revert to the 14,000L/min for 30 consecutive days after pond cleaning;
- The amendment application filed January 2021. Purpose to conserve water and provide some flexibility to reduce water taking:
  - Reduce the maximum taking from 14,000 L/min to 10,000 L/min;
  - Eliminate the word “consecutive” when the water taking increases to 10,000 L/min after pond cleaning;
  - Increase washing days from 180 to 200

# Membership and Next Meeting

- At the last meeting, there was a discussion to formally change some of the CAP members. CAP members that have not responded to meeting invitations or attended a CAP meeting for several years will be notified they will no longer be invited to meetings, however, if they would like to re-join, some time in the future, they can re-apply.
- Next Meeting Date?
  - October

